

**MARCH 2004**  
**ADAR/NISAN 5764**

## SHABBAT SERVICES

**Friday 5, 6 pm**

*New Leadership Direction Service & Dinner*

**Saturday 6, 10 am**

*Shabbat Chavurah: Torah Study*

**Friday 12, 7:30 pm**

*Shabbat Across America*

*Tot Shabbat, 6 pm - Purim*

**Friday 19, 6 pm**

*Speaker: Maria Stiva on "Slavery Today"*

**Saturday 20, 10 am**

*Shabbat Chavurah: Torah Study*

**Friday 26, 7:30 pm**

## TEMPLE ACTIVITIES

**Board Meeting**

*Monday 1, 7:15 pm*

**Beginning Adult Hebrew**

*Wednesdays 3, 10, 17 & 24, 6 pm*

*Also: 4/14, 21 & 28*

**Adult Ed: D'var Torah**

*Wednesdays 3, 10 & 17, 6:30 pm*

**Chevrat Nashim**

*Sundays 7, 21 & 28, 10:30 am*

**Book Fair, Megillah Reading, Shpiel & Purim Carnival**

*Sunday 7,*

*Megillah Reading & Shpiel, 1-2 pm*

*Book Fair, 1 - 5 pm*

*Purim Carnival, 2-4 pm*

*Speaker: Ira Wolfman, 3 pm*

**Progressive Dinner**

*Saturday 13,*

*Dinner, 6:15 pm*

*Dessert, & Book Fair, 8:15 pm*

**Food For Families**

*Sunday 14, 1 pm*

**Cantor's Concert**

*Saturday 20, 7:30 pm*

**Rosh Chodesh Potluck Brunch**

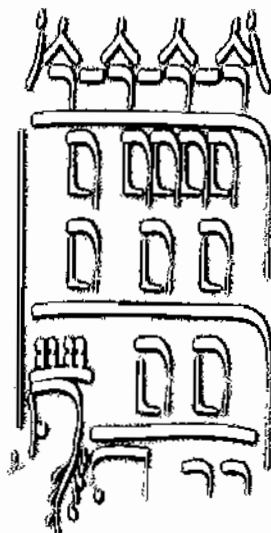
*Sunday 21, 10:30 am*

**PROGRESSIVE DINNER**

*Saturday 13, 6:15 - 10 pm*

**CANTOR'S CONCERT**

*Saturday 20, 7:30 pm*



# Templet

## AFRAID OF THE DARK?

We don't have to know what every word of a prayer means to relate to that prayer in services. In the Hashkivenu, which we pray every Friday night, we ask that God let us lie down in peace and enable us to rise again in the morning, in peace. We can easily imagine that when the prayers were written, long before the city that never sleeps, nighttime could be scary. Wild animals. Bandits. Even evil spirits?

But even a nightlight is no guarantee that night will be peaceful. Our worst anxieties plague us at night. Our problems seem less surmountable. Night can be lonely. I remember my mother assuring me on the occasions when I was worried as a child, just try to go to sleep, everything will look better in the morning. And it usually does.

Is there any part of us that can really embody the prayer of the Hashkivenu: that we will be held in peace and safety, just long enough for things to look a little brighter?

*Rabbi David Adelson*

## EAST END TEMPLE

Congregation El Emet

245 East 17th Street

New York, NY 10003

ph: 212-477-6444

fax: 212-477-6619

[www.eastendtemple.org](http://www.eastendtemple.org)

[info@eastendtemple.org](mailto:info@eastendtemple.org)

Rabbi David Adelson

Cantor Hayley Kobilinsky

Edna Rosen, President



• SEE CALENDAR FOR ALL CLOSING DATES

## FROM THE RABBI'S STUDY

David Adelson

Dear Friends,

I want to encourage everyone to attend the Shabbat service and free congregational dinner on March 5. At the service and afterward at the dinner, we will be discussing a new, more vigorous and inclusive leadership structure for our community. I want to let you know why this evolution at East End Temple is both very Jewish, and a wonderful opportunity for us.

### Jewish Community Life Has Always Evolved

Every major step in Jewish history has been about the community reorganizing in order to better serve one another and serve God. We became a people when we came out of Egypt, and immediately we received/accepted Torah as a structure for our lives. When the sacrificial system was in decline and ultimately ended with the destruction of the Temple, a new system of rabbinic debate and home-oriented prayer life took its place. When Jews spread all over Europe, North Africa, the Middle East and beyond, rabbis and lay leaders created communities based on the realities of local life and culture. When the rationalist Enlightenment captured European thinking, the Reform movement was born. Liberal Judaism in modernity has always been about finding further ways to include more and more individuals in our community life. Women, gay men and lesbians, and non-Jewish family members have become fully participant in shaping a Jewish future.

### We Are Evolving Here at EET

We have an opportunity, here at the Temple, to take such steps toward inclusiveness, growth and greater connection. At the dinner on March 5 (which has been

sponsored by a member family and, therefore, is free to all of us), we will hear about some changes in our leadership structure which will help us better pursue our mission and vision for the Temple. We will try to achieve greater and more diverse levels of participation in directing our future.

### Why These Changes Are Important

When we achieve constant renewal in the ranks of our lay leadership, and participation at all levels of leadership by a wide diversity of our members, we will also achieve our vision of a Temple community which creates levels of connection which are available to all of us. We need all our voices to direct our programs, our study, our financial planning and all aspects of Temple life. We need all our voices to share what we find meaningful and what we are looking for in Jewish and spiritual life, so we can make sure EET reflects those goals. No Jewish institution should ever exist just for its own sake, just to perpetuate itself. We have an obligation and an opportunity to make sure what we plan, fund, pursue and live, is about what connects us to other people, to Jewish heritage and future, to God, and to all that is meaningful in life.

Please come for a wonderful evening of community connection exploring these ideas, and be a part of EET's leadership evolution.

In hope,



## JUDAICA SHOP FINDS Fran Kolin

We have recently gotten in a new supply of AHAVA, the hand cream from Israel made with minerals from the Dead Sea. Ask around... this is a wonderful product!

If your skin is rough or cracks from the cold weather, AHAVA will help! It is rich and creamy, with a mild, fresh fragrance. It's hypoallergenic, and these are the larger size tubes. We sell them for \$15, a substantial discount from retail stores. This is one of those times that indulging yourself will also help the Israeli economy. The classic "win-win" situation.

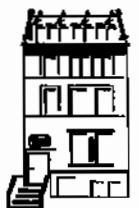
Fran

Contact: [thekolins@worldnet.att.net](mailto:thekolins@worldnet.att.net)



East End Temple  
**TEMPLET**  
245 East 17<sup>th</sup> Street  
New York, NY 10003

Publisher **Edna Rosen**  
Editor **Florence Peloquin**  
Production **Sharon Shemesh**



## **PRESIDENT'S PERSPECTIVE** Edna Rosen

What an exciting inclusive community we have here at East End Temple!

The Retreat at Kutz Camp in late January, with 40 congregants + staff, was one of the magic EET community experiences. Spending time with my community – breaking bread together, doing creative art projects, playing games that also taught us about Israel, folk dancing, worshipping together in a casual setting, bowling, playing Trivial Pursuit and Charades, brought us even closer together. I definitely plan to be at next year's Retreat – hope you will join Sam and me . Many other participants will be also be at the 2005 Retreat. Here's why:

*The best ever!! Well-organized, great activities, wonderful people we met and others we will know forever.* Steve Stampleman

*Learned a lot about Israel! Loved the games and the dancing! Nice cold, crisp fresh air!* Suellen Eshed

*We were surprised at how much fun this was! It provided us a chance, as new members, to get a sense of what our Temple community is all about* Donna Thomases

*Somewhere between Sam's Howard Dean speech, the laughing, the dancing and the singing, I realized that this was the BEST RETREAT YET.* Kaitlin Ofman

*The weather was cold but the experience and people were full of warmth. Great fun. Let's come back soon.* Paul Ofman

*East End Temple – The pleasure was all ours! You are real troopers bracing the cold! Hope to see you next year.*

*Wendy (Camp Director) and the Kutz Staff*

Now I look forward to PURIM on Sunday March 7 as my next magic-community day at EET. Plan to spend the entire day here and bring the kids! Starting at 1 pm with the Purim Shpiel – *The Megillah According to the Beach Boys* – then moving to the Purim Carnival put together by our own Youth Group. Eat Hamantashen, shop at the Annual Book Fair, and listen to our speaker as well. Hope to spend time with you all on the 7<sup>th</sup>.



Contact: [president@eastendtemple.org](mailto:president@eastendtemple.org)

## **New Directions in East End Temple Leadership**

### **ALL EET MEMBERS ARE URGED TO ATTEND**

**Special Shabbat Service and Congregational Dinner  
March 5, 6:00 PM**

In the February *Templet*, Rabbi Adelson offered the first official view of East End Temple's new direction - our Vision and Mission Statement. All congregants are urged to attend this special Shabbat; there is no cost for the dinner and reservations are not needed.

Every vision requires a strong and enabling support structure to make it a reality. The Board of Trustees has approved a new governance structure which will expand the number of congregants involved in Temple decision-making and committee activities. With this increase in opportunities to contribute, the EET Board hopes to encourage and inspire new leadership to help build our future.

### **New board of Trustees**

The elected members of the Board of Trustees will consist of the President, seven Vice-Presidents, a Secretary, and 15 additional Trustees. The seven Vice Presidents will serve as Chairs of their respective committees and will be called Vice President-Finance, Vice President-House, Vice President-Programming, Vice President-Membership, Vice President-Ritual Initiative, Vice President-Strategic Planning, and Vice President-Youth Education. If you are interested in becoming part of East End Temple's future leadership group, please contact Karen Feuer, chair of the Nominating Committee at [kffnyc@aol.com](mailto:kffnyc@aol.com).

A number of current Board members will be in attendance to speak personally about their roles and share their leadership experiences. Please join your East End Temple community for this special evening. We will discuss the new Vision and Mission statement, as well as the proposed changes to our governance structure, and related by-laws changes.

**The cost of this dinner has been generously underwritten by one of our member families. Please plan to join us for the entire evening.**

**NEW INTERFAITH GROUP AT EET  
FIRST MEETING MARCH 23**

Karen and I are a recently married interfaith couple and are expecting our first child. It's a very exciting time in our lives filled with hope and expectation. Rabbi Adelson and the East End Temple family have been here to welcome and support us since early in our courtship, helping us to deal with questions about our wedding, getting married, dealing with our differences, understanding Judaism, raising children, etc. We have spoken with clergy of both faiths, talked to children of interfaith families, spoken to teachers, read books, taken classes and spent many hours talking with each other about what kind of home we want to create amidst our differences. Several months ago, we became committed members of the East End Temple family and have been looking for ways to add value and share our unique perspective with the community. With the guidance of Rabbi Adelson, Edna Rosen and Marcia Muskat, we have been encouraged to start the East End Temple Interfaith Group again as a way to foster education and dialogue amongst ourselves and other Temple members involving interfaith and/or recently converted families. Locally and globally, it seems in our community, there is a NEED for us to understand our differences,

challenge our assumptions, and open ourselves to this dialogue. Everyone in the East End Family who is interested is invited to attend the first of these monthly meetings which is slated for Tuesday, March 23 (6:30 – 8:30 pm) in the Temple. Just in time for Passover and Easter, we hope to discuss issues around the Holidays. Wine and hors d'oeuvres will begin at 6:30; the discussion will commence at 7 pm.

Your input on group discussions and monthly topics, guest speakers and field trips would also be most welcome. The Interfaith Group exists to address the unique issues that affect you and your family, so your feedback is important.

Please email ([adamandkarenschartoff@yahoo.com](mailto:adamandkarenschartoff@yahoo.com)) or call either one of us (Karen: 646-245-2799 or Adam: 917-945-6836) if you would like to attend, or with any other comments or questions. We're looking forward to seeing you.

*Karen & Adam Schartoff*

**LAST CALL**

***Deadline: March 8, 2004***

Reserve your place at the table for the

**EAST END TEMPLE**

**TENTH ANNUAL PROGRESSIVE DINNER**

Saturday, March 13, 2004

6:15 to 9:30 pm



**Be sure to be part of this unique event that brings us together to wine and dine in each other's homes and then share desserts at our Temple home on Stuyvesant Park**

**Return this form to East End Temple, 245 East 17<sup>th</sup> St. by March 8, 2004 (receive full Temple donation)**



**PROGRESSIVE DINNER**

Saturday, March 13, 2004

**Yes, I will pay \$40 to be a dinner guest, as my donation to EET**

Name(s): \_\_\_\_\_ Amount enclosed: \_\_\_\_\_

Phone Number: \_\_\_\_\_ Any Dietary Restrictions? \_\_\_\_\_

**Yes, I will bring a home-made dessert to the Temple, as my donation to EET**

Name(s): \_\_\_\_\_ Phone Number: \_\_\_\_\_

This month promises to be filled with exciting events! Not only is it getting warmer outside, which I, for one, am very happy about, we have two big musical events coming up!

The first is our yearly concert, which will be this month on March 20 at 7:30pm. Our wonderful pianist, Alex Mekinulov, will be performing, as well as Joe Rutkowski, our resident clarinetist extraordinaire. As I mentioned in last month's column, we will be performing classical selections including Schubert's "Shepherd on the Rock," for piano, voice, and clarinet, and a fantasy on Jewish motives for solo clarinet called "New Songs from Old," among many other varied selections for your listening pleasure! ***Grab your tickets soon! This program will surely sell out!***

Next, I have an announcement. What is something that East End Temple is missing? Something that could add to our services and our Jewish communal experiences, provide an added opportunity to give to the community, and receive a wonderful performance opportunity?

### New EET Choir

Yes, you guessed it - I would like to announce the creation of the East End Temple Choir! I hope that many of you will sign up to join the choir- and the good news is that the only requirement is that you love to sing! We will hold rehearsals on Tuesday evenings, and I hope that, if we start rehearsing soon, we will have our choir up and running for services by June! Please let me know in person, or by calling the temple, if you are interested. I guarantee we will have a great time and sing all new and exciting music!

Finally, congratulations to last month's Bar Mitzvah student, Paul Morgenstern, and his family, Gil, Roxana, and Veronica!

Musically Yours,

*Hayley Kobilinsky*

Contact: [cantor@eastendtemple.org](mailto:cantor@eastendtemple.org)

### ANNUAL CANTOR'S CONCERT

Saturday, March 20 – 7:30pm

Enjoy the beautiful voice of our Cantor  
Hayley Kobilinsky

Alex Mekinulov at the piano  
Joe Rutkowski on the clarinet

In our beautiful Sanctuary with its amazing acoustics

ADMISSION - Chai - \$18.00 per person  
Order your tickets in advance!

Dear Parents,

At the end of January, some forty adults and kids from our congregation, the rabbi, the cantor, my family and I went to Camp Kutz in the snowy hills of upstate New York. We stayed there for three days and two nights, played, sang, danced and learned about Israel. It was a wonderful experience, and a great way to be together in creative, joyous activities.

On February 8<sup>th</sup> we had a **Family Education session with a Tu-B'Shvat Seder**. The two events were tied together, learning about the celebration of trees. We explored the symbols that attached to trees and enjoyed tasting their fruits at the Seder that followed. We hope to have even more congregants join us next year.

### Full Moon Holidays

The Hebrew calendar gives us three months in a row of holidays that fall on a full moon (the middle of the Hebrew month). It starts with Tu-B'Shvat (15 Shvat) continues with Purim (14 Adar) and then Passover (15 Nisan). So in March we have two major events: the **Purim Carnival & Megillah Reading** and our **Passover Workshop**, as part of our Family Education Series. The Passover Workshop will be held on March 21, leaving plenty of time to be ready for Passover.

The **Purim Carnival** is run by the **EET Youth Group**. Since the last carnival was held four years ago, our guys are enthusiastic about doing it, and they are filled with exciting ideas. The carnival will follow the Megillah Reading & Shpiel (a Purim skit put on by our youngsters) in the sanctuary, and will be held simultaneously with the opening of our week-long **Book Fair**. While the children play in the Social Hall, parents can hear the **guest speaker** in the sanctuary, or browse through the books on the 4<sup>th</sup> floor. Also plan to attend the **Religious Schol Open-house** that coincides with the Book Fair.

Please mark these dates:

Sunday, March 7<sup>th</sup> 1:00- 4:00 pm – **Megillah reading followed by Purim festival**

March 9<sup>th</sup> - 11<sup>th</sup> – **Religious School Open-House & Book Fair** (during school hours)

Sunday, March 21<sup>st</sup> 2:30 pm – **Family Education: Passover workshop.**

*Hagit*

Contact: [educator@eastendtemple.org](mailto:educator@eastendtemple.org)

**EERNY NEWS** Marc Sobel, Youth Advisor  
Shalom and Purim Greetings to everyone!

Once again this month, I'm going to take a back seat and let our youth group board members share their thoughts with you. This month, I'm happy to introduce Kaitlin Ofman, our EERNY<sup>2</sup> Treasurer:

Hello Fellow East Enders! My name is Kaitlin Ofman, and I am the Treasurer of East End Reform New York Youth (EERNY<sup>2</sup>). I would like to give you all an update of what we've been doing lately. We recently had our second Board meeting of the year. In it, we discussed some of our goals for the next few months. Among them are hosting more great activities, having some fundraisers, possibly conducting some community service activities, and more. As Treasurer, my main goal for EERNY<sup>2</sup> this year is to create a bank account for ourselves so that we may fund more of our own endeavors and have a budget that we can have direct access to and use. Part of this change would include charging membership dues of \$25 per year. This membership fee would include dinner at meetings, lowered or free admission to our events, etc. Please keep your eyes open for that membership form which should be in the mail soon.

*Our next few events are as follows:*

- 3/4/04 - General EERNY<sup>2</sup> **dinner meeting**: come expecting fun!
- 3/7/04 - **PURIM CARNIVAL!!!** The youth group is excited to be planning this year's Purim Carnival. There will be tons of games, prizes, face painting, snacks and even some Hamantashen-making, so we look forward to seeing you all there.

*We will also be hosting a Passover Seder later this semester. EERNY<sup>2</sup> is tons of fun, and while, at the moment, we are relatively small, it's full of great people and it's a sure way to get to know other High Schoolers who are fun to hang out with. This should be a great, fun-filled year, and I hope to see some new people at our next meeting!*

*Stay warm!*

*Kaitlin*

My thanks to Kaitlin for taking the time to share her thoughts.

Take care,

*Marc*

Contact: [eerny@hotmail.com](mailto:eerny@hotmail.com)

**IN SISTERHOOD** Fern Stampelman

March is full of exciting events to attend at EET, so put the Women's Rosh Chodesh Pot Luck Brunch on your calendar now; It's Sunday, March 21, 10:30 am-12 noon. If you enjoyed exploring the significance of "The Barren Women of the Bible" in February, be sure to join us on March 21. This will be the third in a series six study sessions where we explore the role of women in both biblical and modern day contexts with our instructor, Miriam Warshaviak. Call Sharon at 212-477-6444 or contact me at [sfhstamps@aol.com](mailto:sfhstamps@aol.com) by Friday, March 19, to let us know what you're going to bring.

**Think Seder Now**

Another important event is the Women's Pot Luck Seder. It's just around the bend, on Thursday, April 8 at 6 pm. So, on behalf of Sisterhood, let me take this opportunity to invite you, the women of EET and your age 13-plus daughters and guests to attend a Seder that gets women out of the kitchen and into the action for the journey to Sinai. Sisterhood has just purchased a beautiful commemorative Kos Miriam (Miriam's Cup) for our Seder table this year and we are anxious to share its origins with you. Please see Judith Lorber's explanation and checklist.

**More Events**

Finally, two events that are in the works for later on in the year are a "Challah Making Workshop," led by Sharon Shemesh, (date to come) and a "swing dance" evening where we will take it slow and revive what we remember of that dance called the Lindy!

Be sure to look elsewhere in this Templet for information about our very successful FOOD FOR FAMILIES, all that's new in the Judaica Shop and stop by the Helene Spring Library. Many thanks to everyone for supporting Sisterhood by buying Mah Jongg cards through Helen Doneger.

As always, thanks for supporting US, In Sisterhood.

*Fern*

Contact: [sfhstamps@aol.com](mailto:sfhstamps@aol.com)



## THE TEMPLE FAMILY

### Get Well Wishes to

Naomi Forman, Babette Hollister, Betty Phillips & Nancy Schneider

### Deepest Condolences to

Ada and Herbert Perlman, on the passing of Ada's brother

### Welcome New Members

- Jennifer Machado and Robert Gould
- Terry and Michael Slater and their sons, Matthew and Benjamin

## MEGILLAH READING, SHPIEL & PURIM CARNIVAL AT EET SUNDAY, MARCH 7

- THE MEGILLAH ACCORDING TO "THE BEACH BOYS" 1 - 2 PM
- PURIM CARNIVAL 2 - 4 PM

FREE TICKET WHEN YOU COME DRESSED IN A COSTUME, AND ANOTHER FREE TICKET WHEN YOU BRING A NON-PERISHABLE FOOD FOR A FOOD DRIVE. **SO PUT ON YOUR COSTUME AND COME HAVE A BALL.**

FREE ADMISSION.  
GAME TICKETS & REFRESHMENTS FOR SALE.

## The Retreat at Kutz Camp

Dear EET Families,

My sons, Jacob and Benjamin Gordon, and I went on the EET Retreat on January 23-25 at Kutz Camp in Warwick, NY. It was my first time participating in this terrific event and we really enjoyed ourselves. It was a great way to keep "warm" inside and out on this bitterly cold winter weekend. Here's a quick recap of the weekend events and activities:

- We created a community "web" out of a skein of wool which helped break the "ice" (thanks to Hannah and Kaitlin)
- Israeli dancing -- (a total blast)--lead by our own Sharon Shemesh
- We sampled Israeli snacks (Thanks to Fran and Bobby Kolin)
- The kids and adults performed group skits, reenacting moments about Israel's founding fathers. All were incredibly clever, including original slogans, and hilariously funny skits (and costumes -- Shaul -- we will not forget your "rabbi"!)
- Everyone created his/her own woodcut prints based on the ancient Israeli ruins (a great memento directed by our very skilled Hagit)
- Rabbi David Adelson kept us together in mind and spirit and our Cantor had us singing our hearts out

The combination of Jewish education and fun was just right. If you couldn't make it this year, I hope you'll consider joining us next time. My busy schedule almost kept me from going and I am so glad I went with my boys. Let me know if you have any questions.

Best regards, *Julie Livingston Gordon*

## A SEAT AT THE SEDER TABLE

**If you have an extra seat at your Seder table, on Monday, April 5, or Tuesday, April 6, or need a seat at someone else's table, please let EET try to make a match within the Temple community**

**Call Sharon at the Temple office  
212-477-6444**

## Shabbat Across America at EET Friday night, March 12, 7:30 pm

Bring your friends and neighbors to EET for Shabbat Across America.

The biggest and boldest organized event that unifies Jews across North America for a national Shabbat celebration.

A great opportunity to welcome newcomers to the beauty of East End Temple and to the beauty of Shabbat!

## THANK YOU TO OUR FEBRUARY USHERS

Ellen & Henry Ettinger, Lara & Steven Rudd,  
Peter Conrad, Leonard Spring,  
Roxana & Gil Morgenstern

**Final Date of the Season: Sunday, March 14<sup>th</sup>**

What a wonderful accomplishment!! Our January 25<sup>th</sup> Food for Families surpassed all our expectations. We made 340 meals and even had extra bread and fruit to send along to the City Harvest pantry. A group of over 30 people, an all time record, joined together to make sandwiches, pack bags, and have fun. Special thanks to Marc Sobel, our East End Temple Youth Group leader, for organizing the youth group participation.

**We're the Tops**

We are proud to inform you that East End Temple's Food For Families program is now listed on the City Harvest website as one of their TOP FOOD DONORS. Check it out at [www.cityharvest.org](http://www.cityharvest.org).

Here's a list of all the folks who participated in the January 25<sup>th</sup> FFF sponsored by Shirley Lipton. Thank you to: Pearl and Bob Polifka, Marc Sobel, Marian, Robert, and Gregg Fish, Mark, Sarita, Alex and Tania Jofe, Evelyn Hendline, Barbara Katersky, Barbara and Gregory Kimmel, Phil and Sonia Gollance, Lauren Weinberger, John, Paul, and Greg Connuck, Bonita and Harvey Ganot, Helen, Paul, Grant and Anne Levine, Babette Hollister, Mohammed Hoque, Eddie Baurer, Elizabeth and Emily Ginsburg, Linda Hetzer, Ben Fishner, Adam Blumenberg, and Daniel Hochman. I hope I didn't miss anyone.

On March 14<sup>th</sup> we will hold the final Food For Families of the season. The program will be sponsored by Sara Siegel in memory of her granddaughter, Galit Hen. If you have been thinking of coming to Food For Families, why not March 14<sup>th</sup>? Otherwise you'll have to wait for the fall. Please remember to bring **four loaves of bread (not white bread) and 16 pieces of fruit**. Again, please wear a hat to meet health department regulations. See you on March 14<sup>th</sup>.

If you would like to support our new **Food For Families Sponsorship Program** by helping to underwrite the costs, a contribution of \$250 will make you Co-Sponsor for the Day. Because of the success and increased volume of this project and the supplies needed, it now takes two (2) co-Sponsors to cover the costs. There will be six (6) Food For Families Days starting in the fall. Other levels of contribution, starting at \$18, are also accepted for our food fund.

If you have any question, please email Marion Fish.

Come one, come all! It's a community thing!

Contact: [mfish1211@aol.com](mailto:mfish1211@aol.com)



**EAST END TEMPLE DONATION FORM**

Please use this order form to send contributions to any fund(s) you choose. You may use the form below by filling out the information and sending it with your check to the Temple office, attention to the fund chairperson. Please use separate check for each fund.

- |                     |   |                    |                                       |
|---------------------|---|--------------------|---------------------------------------|
| Sisterhood<br>Funds | <input type="checkbox"/> COLLATION/ONEG SHABBAT           | (\$50)             | <b>Elizabeth Gross (718) 335-8459</b> |
|                     | <input type="checkbox"/> FLORAL FUND                      | (\$54)             | <b>June Morse (212) 689-5557</b>      |
|                     | <input type="checkbox"/> HELENE SPRING LIBRARY FUND       | (\$10 per listing) | <b>Barbara Ringel 477-6625</b>        |
|                     | <input type="checkbox"/> TORAH FUND                       | (\$10 per listing) | <b>Carole L. Hyman 477-6444</b>       |
|                     | <input type="checkbox"/> SIMCHA FUND                      | (\$10 per listing) | <b>Temple Office 477-6444</b>         |
|                     | <input type="checkbox"/> FOOD FOR FAMILIES                | (\$18 per listing) | <b>Temple Office 477-6444</b>         |
|                     | <input type="checkbox"/> FOOD FOR FAMILIES DAY CO-SPONSOR | (\$250)            | <b>Temple Office 477-6444</b>         |

The following funds are handled by the Temple Office – 245 East 17<sup>th</sup> Street NYC (212) 477-6444

- |   |                     |
|---|---------------------|
| <input type="checkbox"/> EET BROTHERHOOD YOUTH ENDOWMENT FUND (EETBYEF)         | (\$10 per listing)  |
| <input type="checkbox"/> EL EMET FUND   | (\$10 per listing)  |
| <input type="checkbox"/> FUND FOR THE FUTURE                                    | (\$100 per listing) |
| <input type="checkbox"/> HAMERMESH MUSIC FUND                                   | (\$10 per listing)  |
| <input type="checkbox"/> RABBI'S DISCRETIONARY                                  | (\$25 per listing)  |
| <input type="checkbox"/> SARA A. SPENCER CHILDREN'S EDUCATIONAL RESOURCE CENTER | (\$10 per listing)  |

**FROM** (name of contributor): \_\_\_\_\_

**MESSAGE:** \_\_\_\_\_

**RECIPIENT TO BE NOTIFIED, NAME & ADDRESS:** \_\_\_\_\_

**AMOUNT ENCLOSED: \$** \_\_\_\_\_

**Some Personal Reflections**

*I did not find the world desolate when I entered it,  
And as my ancestors planted for me before I was born,  
So do I plant for those who will come after me.  
Talmud (Ta-anit 23a)*

In Jewish law, charitable giving is a moral imperative. Maimonides instructs us to give from the heart, to give joyfully, and to give often and before being asked. Charitable giving serves another purpose as well. Through it we pass along our traditions to future generations and define our own legacy in repairing and improving our community and the world.

Using the dedication opportunities provided by the Kehila Campaign is one way to create a legacy, and at a time when our new building particularly needs your support. We asked two member families of our Temple how they chose a dedication, and what it means to them.

**Memorial Dedications**

Many of the dedications so far have been in the memory of a loved one. The Beranbaum-Stackhouse family joined the Temple in 1995 and proudly watched their son Ross celebrate his Bar Mitzvah and Confirmation, while Joan became more active as a Board member. The family dedicated the Temple's beautiful wrought-iron front gates in memory of Joan's father, Samuel Beranbaum. They wanted to contribute to the Kehila Campaign to help complete our inspiring new building. "Every time we walk through the front gates, I think of my father -- and I know my dad would be pleased that we made our dedication in his honor," says Joan Beranbaum (a Board Vice President).

The Sussmans have been involved in the growth of the Temple for two generations. When Marge and Jack joined in 1948, they took leadership roles in the Sisterhood and Men's Club; now daughter Judith is active on the Board and son Don's company is donating all the beautiful landscaping around our new Temple. The family joined together to make a contribution to help EET establish financial security for the future and chose to dedicate the landscaping. "Our family's Kehila Campaign contribution was symbolical for the growth of our beloved Temple. We are planting both for today and for those who will come after us," explains member Marge Sussman.

There are still many important Kehila dedication opportunities available: Golden Prayer Strips, School Audio/Visual Equipment, Holocaust Memorial Installation, Musical Key Board and the Eternal Light, among others. If creating your own legacy is something you have ever wondered about, now is the time to act.

Contact: [jberanbaum@dc37.net](mailto:jberanbaum@dc37.net) or [jhs@nyc.rr.com](mailto:jhs@nyc.rr.com)

Another book event is only days away! The Temple's annual Book Fair, which opens on Sunday, March 7, is one more opportunity to contribute to the Library. We have ordered copies of titles we would like to add to our shelves – selections that will make the Library an even greater resource for congregants looking for information and guidance on Jewish life cycle events, Jewish cooking, and Jewish life in general. Your purchase of one (or more) of these books will be recognized with a personalized bookplate that will be affixed inside the front cover.

A number of you have been inquiring about donating your books to the Library. We welcome your generosity, but because of space constraints, we cannot accept all of the books that we would like to own. Our donation policy asks that you submit a list of your books in advance rather than bringing them in. This way, our Committee can review the titles and determine which would most enhance our collection. Our wise librarian, Marsha Labovitz, has advised us that donated books should come from smoke-free homes.

We'll see you at the Book Fair!

*Beth*

Contact: [Bringel@aol.com](mailto:Bringel@aol.com) or [BKLYNC@aol.com](mailto:BKLYNC@aol.com)



**The Helene Spring Library** is now open for business.

The Library is open whenever the Temple is open. You do not need the librarian present to borrow a book; just follow the instructions on the bookcase under the front window. Books may be borrowed up to three weeks and then returned to the Temple office for the present.

Catalog notebooks that will help you locate a specific title, are also on the instruction table. The privileges of the library are available to members only.

**THEATRE TUNES...**

**Sly Fox**  
*Seats available for April 21*

**Bombay Dreams**  
*Seats available for May 12*



**Call the Temple office 212/477-6444. Do not miss another show - get your ticket today**

## **WHY A WOMEN'S SEDER?**

Each year for the past several years, East End Temple women members have held a women's Seder on the next to last night of Passover. It has gone from 12 to more than 30 participants. This year, the EET Women's Seder will be organized by Sisterhood and led by Cantor Hayley Kobilinsky. It will be held on Wednesday, April 8 at 6 pm in the Temple Social Hall.

All women Temple members and their age 13-plus daughters and women guests are invited. Everyone is asked to contribute food. There is a \$5 charge to cover other items.

## **WHAT'S DIFFERENT ABOUT A WOMEN'S SEDER?**

*Women's Seders, using women's Haggadahs, have been popular since the early 1970s.*

*At many family Seders, men lead the ritual.*

*At our women's Seder, women lead the ritual.*

*At many family Seders, women do the cooking.*

*At our women's Seder, all participants bring food.*

*At many family Seders, the Haggadah is centered on men's roles and activities.*

*At our women's Seder, women's roles and activities are celebrated.*

*At many family Seders, only the leader reads the blessings.*

*At our women's Seder, everyone participates and takes turns reading.*

*At many family Seders, the language is masculine.*

*At our women's Seder, the language is gender sensitive.*

*At many family Seders, there is only the Elijah cup filled with wine.*

*At our women's Seder, there is also a Miriam's cup filled with water.*

*At many family Seders, there are five ritual items on the Seder plate.*

*At our women's Seder, there is also an orange on the Seder plate.*

**Why a Miriam's cup? Why an orange?**

**Come to the EET Women's Seder and find out!**

PLEASE CALL SHARON AT 212 477-6444 or email her at [info@eastendtemple.org](mailto:info@eastendtemple.org) TO TELL HER YOU ARE COMING, HOW MANY GUESTS YOU ARE BRINGING, AND WHAT YOU AND YOUR GUESTS WILL CONTRIBUTE.

## **Types of food to be contributed (enough for 8 persons)**

- Matzos
- Wine (red and white) – kosher for Pesach
- Gefilte fish (no MSG, please!) and red and white horseradish
- Charoset
- Hard boiled eggs
- Parsley or other greens
- Main dishes
- Side dishes
- Vegetables, oranges
- Cakes, desserts



*Judith Lorber*

## **Slavery Today**

Maria Sliwa of American Anti-Slavery Group will speak during Shabbat Services about slavery in the world today.

Please be with us for this important Passover preparation. A brief video and further conversation will follow services at the Oneg.

Friday, March 19, 6pm.

## **Save the Date -**

March for Women's Lives  
Sunday April 25 in Washington, D.C.

March with members of EET and other Reform Jews.  
Registration details in the April Temple

## Elaine Muskat: From All-American Girl to All Jewish-American Mother

As personal histories go, Elaine's is probably not so unusual. But don't try to rewrite a word of it. Elaine Muskat loves it just the way it is. In 1939, Elaine, a second generation American girl, was growing up on much that America held dear: In their family's tastefully decorated Philadelphia home, Elaine and sister Marilyn enjoyed their mom's beautifully set dining table and seven-course, promptly served meals, with some of America's favorites like baked ham and Campbell's soup. After dinner, the sounds of Kate Smith were heard on the family Philco radio while Dad read from his Journal- American newspaper.

At age 15, Elaine was introduced to the family of her future husband, Jack Muskat, in Roosevelt, New Jersey and discovered that life need not be so precise. Jack's mother Sarah practically never closed her kitchen. At almost any time of the day or night, one could expect to find Sarah in her Hoover apron, cooking and serving one of her Eastern European specialties (think brisket and home-made chicken soup) The place settings did not include two sizes of forks (in fact, the mismatched silverware stood in a Yahrzeit glass in the middle of the kitchen table), and the newspapers and radio stations of choice were Yiddish only. The Lowenthals and Muskats may have occupied very different corners of the Jewish-American universe, but they spoke the same language because they spoke from the heart.

### Family Values

Despite the cultural divide, what mattered most were the health, happiness and welfare of family and friends: a theme central to Elaine's most cherished memories. When Elaine first met Jack, he was living with his Brooklyn grandmother and completing his NYC high school education while Elaine's dad, Leo, was boarding at the Muskat home in Jersey Homestead (an Eleanor Roosevelt, government supported community), in order to secure work as a textile cutter. Elaine fondly recalls her dad's eagerly awaited return trips to Philadelphia, often carrying bags of 'exotic' home-cooked goodies from Sarah Muskat's kitchen. Elaine's family became residents of the Jersey Homestead community and life-long friends with Jack's parents even after Elaine's Chesterfield coat and high heels raised eyebrows in this tight-knit Orthodox community where women shopped in their babushkas.

The year 1942 found Elaine's family on the move again to Queens. Elaine's sister Marilyn enrolled in an Army Cadets Nursing Program; Jack enlisted in the Army



Signal Corps and Elaine and Jack together shuttled between weekends in NJ and weekdays in Queens. After Basic Training and a weekend pass that allowed them to arrange a Manhattan wedding hastily, Jack shipped off to fulfill his tour of duty through England, France, Germany and Belgium. For three years, Elaine worked in civil service for The Army Transportation Core and then for The Office of Scientific Research and Development where, unbeknownst to the office staff, Elaine and her coworkers typed formulas relating to the atom bomb. Through it all, Elaine continued to live her weekends with the Muskats in New Jersey, absorbing their unconditional love and support.

In 1946 Elaine and Jack secured an apartment in Stuyvesant Town, and spent the next 30 years establishing their own style that included an open kitchen, albeit with matching silverware. That special brand of Yankee Doodle/Yankee Pot Roast hospitality looms large in the home and temple celebrations hosted by Elaine's children, Steve and Deborah of Woodcliff Lake, NJ, and Mike, Marcia, Rick and Wendy of Peter Cooper Village. All three of Elaine's sons and five of her ten grandchildren are proud third and fourth generation members and B'nei Mitzvahs of East End Temple. Her sons' shoe company is also a family affair where three of the grandchildren continue the tradition of one-for-all and all-for-one.

We'd love to hear your story. Call Marcia Muskat 212/477-6444 and tell her that you are ready to share.

**CONTRIBUTIONS** We are grateful to the following people for their generosity:

**EL EMET FUND**  
**YAHRZEIT OBSERVANCES**

**Michael Arsham**  
for Betty Guttman  
for Selma K, Arsham

**Rodney Elkind**  
for Katie Elkind

**Susan & Steven Felsher**  
for Mildred Felsher

**Irwin E. Meyer**  
for Minnie Meyer

**Selina Morris**  
for Daniel Schreiber

**Augusta Packer**  
for Morris Packer

**Florence Peloquin**  
for Charles Colman

**Therese W. Trachtman**  
for Lucille Weiss

**Sandra Vasa-Sideris**  
for Irene Vasa

**Theodore E. Clark**  
**Roslyn Karman**  
**Julie M. McCarthy**  
**Hannah Misol**  
**Alison & Jeff Rosenberg**  
**Stuart Tepper**  
In memory of Joseph Siegel

**Anna & Alex Mekinulov**  
In memory of Yakov Drabkin  
  
Birthday blessings to our  
granddaughter Talia

**RABBI'S DISCRETIONARY FUND**

**Mary S. Bleiberg & Family**  
Thank you Rabbi Adelson for  
helping our family say goodbye to  
Joe. We shall miss him greatly.

**Fran, Steve & Mark Grodzinsky**

**Rachel & Stephen Feldgoise**

**Merry & John Burke**

**Patty & Larry Eckstein**  
In memory of Hannah Naftalison

**Florence Peloquin**  
To applaud Rabbi Adelson's decision  
to conduct interfaith marriages

**Ada & Herb Perlman**  
To thank Rabbi Adelson for his  
concern & caring on the loss of  
Ada's beloved brother, Wilfred  
Goldberger

**SIMCHA FUND**

**Marcia & Michael Muskat**  
Happy birthday to wordly &  
wonderful & wise Lorraine Weiss

**HELENE SPRING LIBRARY FUND**  
**EET Sisterhood**

Wishing Lorraine Weiss a very  
healthy, happy 80th birthday!

**Gertrude & Murray Bittman**  
Wishing a complete and speedy  
recovery to Betty Phillips

Wishing a complete & speedy  
recovery to Helene & Leonard  
Spring

Wishing a complete and speedy  
recovery to Rita Cohen

Wishing a complete and speedy  
recovery to Jerry Ginsberg

**Bess Gershenfeld**  
Get well wishes to Betty Phillips

**Norma Hirsch**  
Get well wishes to Naomi Forman  
  
Get well wishes to Helene & Leonard  
Spring

**Helen & Philip Hyman**  
Best wishes for a speedy & full  
recovery to Helene Spring

Best wishes for a speedy & full  
recovery to Leonard Spring

Best wishes for a speedy & full  
recovery to Betty Phillips

**Selma Lashine**  
Best wishes for the continued good  
health of Helene & Leonard Spring  
  
**Shirley Lipton**  
Wishing Leonard Spring a quick and  
complete recovery

In gratitude for the recovery of  
Florence Herz

Love & best wishes for a complete  
recovery to Rita Cohen

**Alex Mekinulov**  
In memory of Rafael Mekinulov

**June Morse**  
For the speedy recoveries of Helene  
and Leonard Spring

For the speedy and complete  
recovery of Rita Cohen

Best wishes to Babette Hollister for a  
speedy & complete recovery

Best wishes to Nancy Schneider for a  
speedy and complete recovery

**Marcia & Michael Muskat**  
For Helene Spring's speedy recovery

Condolences to Myra Kronenthal on  
the passing of her brother-in-law

**Carol & Andrea Nimberger**  
In loving memory of husband &  
father, Bruce Nimberger

For the speedy & complete recovery  
of Nancy Schneider

For the continued recovery of Betty  
Phillips

For the speedy & complete recovery  
of Naomi Forman

Congratulations to the Eshed family  
on Matthew's Bar Mitzvah

**Rachel Robbins**  
In memory of Lesley Spring Sanders

**Steven Sanders**  
In memory of Wolf Sanders on his  
yahrzeit

In memory of Sam Sanders on his  
yahrzeit

**Helene & Leonard Spring**  
To thank the EET family for their  
cards, contributions, flowers, & visits  
during the time we were under the  
weather. Todah Rabah!

Best wishes to Babette Hollister for a  
speedy & complete recovery

Congratulations to Judy Seplowin &  
Mark Kalish on the birth of twin  
daughters, Rebecca & Jessica

Congratulations to Jennifer Frost &  
Richard Prass on the birth of their  
daughter, Lyla Ann

Best wishes for a complete & speedy  
recovery to the Kimmel family

In memory of Jon Levison's mother  
  
Congratulations to Lorraine Weiss on  
her 80th birthday

**Helene Spring**  
With many thanks to Marcy Einhorn  
for her special kindness

**Bea Strasnick**  
With best wishes for the complete  
and speedy recoveries of Helene &  
Leonard Spring  
  
With best wishes for the complete  
and speedy recovery of Betty Phillips

**Lorraine Weiss**  
Get well wishes to Babette Hollister

**Charlotte Wilson**  
For the speedy recovery of Rita  
Cohen

For the speedy recovery of Helene  
Spring

**Barbara, Barry & Gregg Kimmel**  
In gratitude for our protection

**FUND FOR THE FUTURE**

**Richard & Mary Grant**  
**The Kaufman Family**  
In memory of Joseph Siegel

---

**FOOD FOR FAMILIES****Norma Kartzmer**Wishing Leonard & Helene Spring  
all the best**Adele Klausner**In memory of Jack Klausner &  
Sophie Hoening**Marcia & Michael Muskat**Much appreciation to Edna Rosen for  
the 2/04 Temple, President's  
Perspective list of activitiesSpeedy recovery & best wishes to  
Babette Hollister**Florence Peloquin**For the speedy and complete  
recovery of Babette Hollister, Nancy  
Schneider & Naomi Forman**Thelma Spinrad**For the prompt recovery of Helene &  
Leonard SpringFor the prompt recovery of Betty  
PhillipsIn memory of Rose S. Spinrad &  
Golda Brandwein**Helene & Leonard Spring**

To help feed the hungry

---

**TORAH FUND****Matt & Rich Bengloff**

In honor of Rabbi Adelson

**Florence Herz**

In memory of Ada Perlman's brother

**Leo Kuhn**

Get well wishes to Rita Cohen

**Ada & Herbert Perlman**

In memory of Joseph Siegel

---

**HAMERMESH MUSIC FUND****Marcia & Michael Muskat**All good wishes for a speedy &  
complete recovery for Nancy  
Schneider

---

**FLORAL FUND****Bea Strasnick**In loving memory of Joel Lieberman  
& Irving Strasnick on their yahrzeits**Lorraine Weiss**In honor of her 80<sup>th</sup> birthday

---

**SARA A. SPENCER CHILDREN'S  
EDUCATIONAL RESOURCE CENTER****Marcia & Michael Muskat**

Well done, Hannah Stampleman!

Thanks for sharing your thoughts on  
"Edith's Story"

---

**EET YOUTH ENDOWMENT FUND****Nancy & Larry Schneider**Best wishes for a speedy recovery to  
Leonard and Helene SpringIn memory of Bella Friedman, on her  
yahrzeitThanks for everyone's prayers for  
good health to Nancy SchneiderWhile we accept phoned-in  
contributions for our various funds,  
the surest way to ensure accuracy  
is to put it in writing and send it to  
the Temple office with your check.**Memorial Plaques purchased for:**

- Hannah Naftalison by her daughter, Diana Shapiro
- Stanley H. Slom by his wife, Deborah Slom

**CHARLES S. SALOMON****RIVERSIDE MEMORIAL CHAPEL\***

180 West 76 Street New York, NY 10023 326-6600

*Our Service Is Available in the Temple, Home, or our Chapel*\*is a subsidiary of Service Corporation International  
1929 Allen Parkway, Houston, TX 7709 (713) 522-5141

\*\*\*\*\*

**Temple Sanctuary Sayings:**Prayer Strips on the left wall as you face the Bima, five  
strips down from the ceiling:

- "Justice, Justice shall you pursue"
- "May God bless you and Keep you"
- "May a new light shine upon Zion, and may we  
all soon merit its brilliance"
- "Nation shall not lift up sword against nation,  
nor shall they learn war anymore"
- "Do justly, love mercy and walk humbly with  
your God"

\*\*\*\*\*



**MORAN'S**  
- C H E L S E A

212.627.3030 • fax: 212.741.3025  
email: moransnyc@aol.com • www.moransny.com  
146 tenth avenue • new york, ny 10011



# March 2004

## East End Temple

Sunday	Monday	Tuesday	Wednesday	Thursday	Friday	Saturday
7 10:30 AM Chevrat Nashim 1:00 PM - 2:00 PM Megilat Reading & Shpiel 1:00 PM - 5:00 PM Book Fair 2:00 PM - 4:00 PM Purim Carnival 3:00 PM Speaker	8 7:15 PM Board Meeting	9 9:30 AM Melton Mini School 4:00 PM Religious School 5:15 PM RS Open House 7:00 PM Ritual Initiative	10 4:00 PM Religious School 4:45 PM RS Open House 6:00 PM Begin. Adult Hebrew 6:30 PM Adult Ed: D'var Torah	11 4:00 PM Religious School 5:15 PM RS Open House 6:00 PM Youth Group	12 6:00 PM Tot Shabbat 7:30 PM Shabbat AcorSS America Services	13 6:15 PM Progressive Dinner 8:15 PM Dessert, Coffee & Book Fair
14 1:00 PM Food For Families	15	16 9:30 AM Melton Mini School 4:00 PM Religious School 7:00 PM YEC	17 4:00 PM Religious School 6:00 PM Begin. Adult Hebrew 6:30 PM Adult Ed: D'var Torah	18 4:00 PM Religious School 5:30 PM 7th grade meeting 5:30 PM Confirmation Class	19 6:00 PM Shabbat Services <i>Speaker, Maria Siliva on "Slavery Today"</i>	20 10:00 AM Shabbat Chavurah: Torah Study 7:30 PM Cantor's Concert
21 10:30 AM Chevrat Nashim 10:30 AM Rosh Chodesh Poduck Brunch 2:30 PM - 4:30 PM Pesach Family Ed	22	23 9:30 AM Melton Mini School 4:00 PM Religious School	24 4:00 PM Religious School 6:00 PM Begin. Adult Hebrew <b>April Templet Closing</b>	25 4:00 PM Religious School 6:00 PM Youth Group	26 7:30 PM Shabbat Services	27
28 10:30 AM Chevrat Nashim	29 7:00 PM Board Meeting	30 9:30 AM Melton Mini School	31	Spring Recess 3/29 - 4/13		