

MAY 2004
IVAR/SIVAN 5764

SHABBAT & HOLIDAY SERVICES

Friday 7, 6 pm
Kabbalat Shabbat
6th & 7th grade participation

Saturday 8, 10 am
Shabbat Chavurah: Torah Study

Friday 14, 7:30 pm
Tot Shabbat, 6 pm - Shavuot

Friday 21, 6 pm
Kabbalat Shabbat

Saturday 22, 10 am
Shabbat Chavurah: Torah Study

Tuesday 25, 6 pm
Shavuot & Confirmation w/Bikurim & Religious School Celebration Honoring our Teachers

Wednesday 26, 10 am
Shavuot & Yizkor

Friday 28, 7:30 pm

TEMPLE ACTIVITIES

Chevrat Nashim
Sundays 2, 9, 16, 23 & 30, 10:30 am

Dialogues With The Biblical God
Adult Education Discussions with Sam Rosen
Wednesdays, May 5 & 12, 7 pm

Art Exhibition and Auction
Sunday 16, 2 pm

Book Club -
Your Mouth Is Lovely
Wednesday 19, 7:30 pm

Congregational Dinner
Honoring Edna Rosen
Friday 21, 7:30 pm

Rosh Chodesh
Sunday 23, 10:30 am

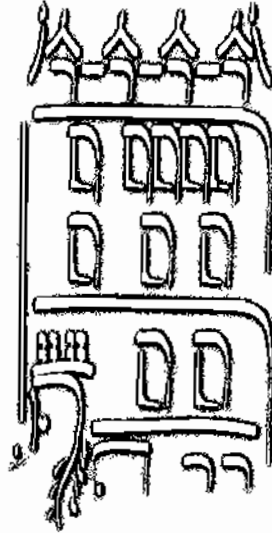
Tikun Leil Shavuot:
Special Study and Light Dairy Supper
Tuesday 25, 8:30 pm

CONGREGATIONAL DINNER
HONORING EDNA ROSEN

Friday 21, 7:30 pm

SHAVUOT & CONFIRMATION W/BIKURIM & RELIGIOUS SCHOOL CELEBRATION HONORING OUR TEACHERS

Tuesday 25, 6 pm



Templet

DAY AND NIGHT, NIGHT AND DAY

As I write, I am looking out the window at the fading light in Stuyvesant Park and at the evening sky. At Friday night services, and every evening, we say the prayer *Ma'ariv Aravim*, or, the One who brings on the evening. In the morning we say a different prayer, in which we give thanks for the sun rising on yet another day. In the evening, we acknowledge the sunset and the coming of night. Even if we do not understand all of the Hebrew words, we can relate to the message in this prayer, which is much more important than the individual words themselves.

Whether in a sunset, a sunrise, a beautiful vista or in the flowers coming up in the spring, nature puts us in touch with wonder at being a part of the world. The first thing Torah tells us God created was light and dark. There is no more basic prayer than an acknowledgement that we are a part of the world, we are a part of something greater than ourselves. By giving thanks both for the day we have just lived and the natural world we live in, we acknowledge both time and space. By saying *Ma'ariv Aravim*, we connect to the simplest of all things, the sunset, and connect to all there is in the universe, and to its creator.

May we delight in our days and gently receive our nights.

Rabbi David Adelson

EAST END TEMPLE

Congregation El Emet

245 East 17th Street

New York, NY 10003

ph: 212-477-6444

fax: 212-477-6619

www.eastendtemple.org

info@eastendtemple.org

Rabbi David Adelson

Cantor Hayley Kobilinsky

Edna Rosen, President



• SEE CALENDAR FOR ALL CLOSING DATES

Dear Friends,

How many of us have considered re-inventing ourselves? Perhaps in our work lives, or with a move to a new city? The most profound re-invention one can undergo in religious life is conversion. At any given time, I work with about seven people who are studying toward conversion to Judaism. These people form an important part of our Temple community, and a growing number of the Jewish people in America. I am delighted to share a bit about their process, and the impact their courageous re-invention has on their own lives and on all of us.

The Process of Conversion

Maimonides, in his *Mishneh Torah*, his great legal code, instructs us that if, after we inform a person about some of the wonderful and some of the difficult parts of being a Jew, they still want to convert, then we accept them, no questions asked. We are also told not to be overly circumspect in evaluating someone's motives; all they need is to be genuine in their interest. Very often individuals who approach me to study for conversion are in a committed relationship with a Jew, but not always. They are already at the point of having been attracted to wonderful aspects of Jewish life: a valuing of family life, of ethical ideals, and of spiritual openness and sincerity.

Everyone who works with me enrolls in either the Union for Reform Judaism's (URJ's) course on Introduction to Judaism, or the longer and more intensive *Derech Torah* (the Way of Torah) class offered through the 92nd St. Y. If they are in a relationship, they enroll with their partner. Then, they meet with me monthly to discuss three areas of their growth: a) their learning, both what they are receiving and what is missing from their formal studies; b) their experiences, such as Shabbat service participation, experimentation with Shabbat life and *kashrut*, holidays, and experiences in the world; and c) exploring their relationship with God, or however they describe their spiritual life and how they find meaning. The length of the process varies from person to person, but it usually lasts about one year.

The Impact on All our Lives

What is clear is how dramatic and wonderful this period is for just about all conversion students. These are people who are taking a year of their adult lives to focus on the questions of how they seek meaning, what community can mean, and how religious life might support their busy lives in New York City. Their study of Torah and experimentation with a Jewish life invariably deepen their relationships with partners, as they work out these life choices together. Their

processes always take them to much deeper places than they ever would have predicted. When they are in relationships, their born-Jewish partners always experience gratitude for their own spiritual growth. I am so impressed by these individuals and their commitment that I wish everyone in our community, both born-Jewish and not, would immerse in a year's reflection and study in a similar way, because I see how meaningful this process is for so many.



The enrichment to our Temple community is great for the presence of so many converts and students to conversion. They participate in services often and most become members of the Temple. Our recently formed Young Members' Group, made of couples and singles in their 20's and 30's and which has been drawing about 25 people to events, is over half comprised of students for conversion or recent Jews-by-Choice (the technical name for those who convert to Judaism) and their partners.

Diversity in our Community

Moreover, these Jews-by-Choice bring such a wealth of diversity of background to the Jewish community. My wife Lynn's father became a Jew at the time of marrying her mother. Lynn grew up in a Jewish home and belonging to a synagogue, and also delighting in the Southern Baptist world of suburban and rural Georgia she knows from spending time regularly with grandparents and other relatives. She describes herself as feeling 100% Jewish, "with a bonus 50%" Southern Christian heritage. We all know the strength which a community can derive from having a fascinating diversity of people all engaged in a common project.

I am so proud of the Jews-by-Choice in our community, as I hope we all are. May it be the blessing of East End Temple and the whole Jewish community that the vibrancy of Jewish life will continue to attract increasing numbers of Jews-by-Choice. May we all, together, go from strength to strength.

David Adelson

East End Temple
TEMPLE
 245 East 17th Street
 New York, NY 10003

Publisher **Edna Rosen**
 Editor **Florence Peloquir**
 Production **Sharon Shemesh**



PRESIDENT'S PERSPECTIVE

Edna Rosen

com-mit-tee *n.* A group of people officially delegated to perform a function, as investigating, considering, reporting, or acting on a matter. (*The American Heritage Dict.*)

Committee is a very important word, a very important concept, and a vital reality in the life of a congregation. Unlike a business, a Temple is staffed by a small group of paid employees and professionals. The bulk of the work, the task of imagining and working toward the future, is accomplished by a group of dedicated, **committed** volunteers, working in concert with the congregation's professional staff.

To expand programming, manage a much larger facility, work on increasing our membership, oversee the Religious School and Youth Group programs, assist in serve our members' spiritual needs, plan long-term goals, and assure the financial viability of the congregation, *committees of committed members do much of the work!*

sub-com-mit-tee *n.* A subordinate committee composed of members appointed from the main committee. (*The American Heritage Dictionary*)

Not everyone can spare the amount of time needed to be heavily involved in heading a large committee. That's why there are many **subcommittees** to work on smaller projects. To work at an event, participate in a social action project, plan an adult education class, help out a fellow congregant in a time of need, be a class parent, participate in a special service, plan for building maintenance, write an article for the *Templet*, etc., etc. does not have to lead to a major on-going **commitment** of time.

Who benefits from the work of each individual on a **committee** or **subcommittee**? Everyone in this congregation!

Please contact me with an idea of how much time you have available for work at EET, and your interests, special concerns, and areas of expertise. I will work with our **committee** chairs to match you with a volunteer job. We need your help

I'm also putting together a list of people who can be called on to work at particular events throughout the year. Right now, we need volunteers for our fund-raising event on May 16th - our *Art Auction*.

Looking forward to hearing from you -

Contact: president@eastendtemple.org



CANTOR'S

Hayley Kobilinsky

It was my pleasure to be a part of this year's Women's Seder, which was even better than last, especially considering the new venue of our own social hall!

However, the biggest musical news of the month is the (re)formation of the East End Temple Choir. I am very pleased to announce that our new choir has had a wonderful turnout, and we will be performing at the beginning of next month. The remaining dates of rehearsals are Tuesdays, May 4, May 11, May 18, and our dress rehearsal on Thursday, June 3, all at 8pm. Our first service will be June 4 at 6pm. It is not too late to join in time for our first service if you make it by May 4! Please come!

I'd like to congratulate Joel Hochman and his family on his Bar Mitzvah last month! Well done!

Musically Yours, *Hayley Kobilinsky*

Contact: cantor@eastendtemple.org



JUDAICA SHOP FINDS

Fran Kolin

May brings us Mother's Day, a time to remember, celebrate, and honor our moms. Our Sisterhood Cookbook is chock full of recipes submitted by many of the Temple's best cooks. Buy a Cookbook, give Mom the day off, and cook up a storm! You could even have it autographed by Temple members you already know! Or maybe Mom is ready to own her own Tallit. We have lovely organza ones, or find out Mom's favorite color, and see what we've got in silk. Is Mom a tea drinker? Our Wissotsky Tea Box is the best. Oh, and did you pour wine over a few Haggadahs and want to replace them? Did your seder plate hit the floor? Have you sworn off the crumbs, and realize that the solution is the upright Lucite matzah box? Now's the time to take action. Come shop the Shop!

Fran

Contact: thekolins@worldnet.att.net

DIALOGUES WITH THE BIBLICAL GOD

Adult Education Discussions with Sam Rosen

Wednesdays, May 5 & 12, 7 pm

From biblical times to the present, Jews have wrestled and argued with God. We have argued, cajoled, and even fought physically with the Deity. At these two sessions we will discuss how both the Jewish people and the Biblical God grew as a result of these arguments, battles and dialogues.

Material is available in the Temple office for those interested in participating in this dialogue.

EDUCATOR'S CORNER Hagit Halperin

Hello to all,

April: A very full month. We had a long Passover vacation (two weeks) and, a week after that we observed the Holocaust on **Yom Hashoah**; a week later, we commemorated **Yom Ha'atzmaut** – the Israeli Independence Day. This year, in the tradition of the last three years, we all went to Town & Village Synagogue for a **Celebration of Israel**, joining with Brotherhood Synagogue.

May has three weeks of Religious School, and then we are off for the year. Those three weeks will be very busy for us, finishing up our work. May hosts two Jewish holidays: one is **Lag-Ba'omer**, which falls on the same day as Mother's Day, and it presents a good opportunity to go out and picnic, in the Jewish tradition of this holiday (weather permitting).

The second important holiday, one of the three ancient pilgrimages-to-Jerusalem holidays, is **Shavuot**. (The other two are Pesach and Sukkot). We will combine two important celebrations with this holiday. Shavuot was the holiday in which the Israelites would bring their harvest to the Temple in Jerusalem. Here, our children will bring the harvest of their work in Religious School to show as all; then we will celebrate and honor our teachers. Also, the **confirmation class** will bring their work of the last two years to a conclusion. We hope to have a full house at this celebration which will sum up this school year.

As we finish the year, (May 20th is our last school day!) the children are going to vote where to send the money that we collected as **Tzedakah** all this school year. Our 7th graders will choose three organizations; all the children will vote as all of them contributed. This is a good time to discuss charity with your children and discuss the organizations that you support.

Events this month:

- **Sunday, May 2nd** – Family Education Program for 7th graders.
- **Friday, May 7th, 6:00 pm** – Kabbalat-Shabbat Service & Dinner with 6th & 7th graders.
- **Tuesday, May 25th, 6:00 pm** – Shavuot & Confirmation Services w/ *Bikurim* & School Celebration.

Bi'vracha,

Hagit

Contact: educator@eastendtemple.org



Salute to Israel Parade Sunday, May 23, 2004

Join the contingent of Reform synagogues that will march in the Salute to Israel parade on Fifth Avenue. Be part of this exciting event as we demonstrate Reform Judaism's proud and unremitting support for Israel during these times of growing anti-Zionism and anti-Semitism.

Join EET and the Reform Movement
in the
Salute to Israel Parade
Sunday, May 23, 2004
11am - 4pm, Rain or Shine
Fifth Avenue, 57th to 79th Streets

Let us know if you plan to attend

Shavuot Bikurim: Our First Fruits

In Temple times, Shavuot was a time for bringing *Bikurim*, the first fruits of the flock and the field. This year on Shavuot, in addition to Confirmation, we will offer *Bikurim* in the form of special projects prepared by each grade of our Religious School.

Please be with us on **Shavuot, May 25**, to honor the work of all our teachers, and honor our students by enjoying their special *Bikurim* projects.

Shavuot and Confirmation Services are at **6 pm** on **May 25**, with the Oneg and *Bikurim* presentation immediately following in our Social Hall.

CHARLES S. SALOMON

RIVERSIDE MEMORIAL CHAPEL*

180 West 76 Street New York, NY 10023 326-6600

Our Service Is Available in the Temple, Home, or our Chapel

*is a subsidiary of Service Corporation International
1929 Allen Parkway, Houston, TX 7709 (713) 522-5141

IN-SISTERHOOD Fern Stampleman

One of the sweeter events of the season was our annual Women's Pot Luck Seder. The evening was inspirational, as always, and a good time was had by all.

Our Rosh Chodesh Pot Luck Brunches have been well attended. The last one, this year, will take place on Sunday, May 23rd. It has been our good fortune to have Miriam Warshaviak lead us in study these past months and we wish her well as she embarks on a year's work in Israel, under the auspices of the Avi Chai Foundation.

Another minor adjustment to the best laid plans; the Sisterhood Shabbat has been rescheduled. Instead of May 14th please put Friday evening, June 18th on your calendars. Florence Peloquin has graciously accepted an invitation to be the guest speaker. She'll tell us about her career in magazine publishing and the many barriers she had to break down in order to succeed.

Please be on the lookout for an upcoming Sisterhood mailing. It will provide you with the information you need to offer congratulations and best wishes to East End Temple's Confirmands. The Shavout and Confirmation Services are on Thursday evening, May 25th. On this occasion, Sisterhood will present each student with a book of UNIONGRAMS written by YOU. This is a wonderful way to let our youth members know how much they mean to the life of our Congregation.

For a schedule of future Sisterhood Meetings, please contact me at my e-mail address or through the Temple office.

SISTERHOOD SCHEDULE AT A GLANCE:

- May 23rd Rosh Chodesh
- May 25th Shavout and Confirmation Services
- June 13th Rosh Chodesh
- June 18th Sisterhood Shabbat

As Always, thank you for supporting US, In Sisterhood

Fern

Contact: sfhstamps@aol.com

THEATRE TUNES...

"The Frogs"
Seats available for September 8th



Call the Temple office 212/477-6444. Don't miss another hit show - get your tickets today!

KEHILA CAMPAIGN UPDATE Sarita Gupta

*****Note Date Change*****

Kehila Wall Dedication - June 4, 2004

The congregational dedication of the Kehila Wall and unveiling of the donor plaques honoring the first families to give to the Kehila campaign is now scheduled for **Friday, June 4, 2004**. Please join us with your family and friends for Shabbat services at 6 pm, and celebrate with us as we read the names, the Rabbi blesses the Kehila Wall, and we unveil the plaques. A festive Oneg Shabbat will follow the dedication.

As we observe our one-year anniversary in our new building, the Kehila Campaign has reached over 60% of its goal of raising \$500,000 to complete and beautify our new Temple. But our work is not done and we'd love to have 100% participation in this campaign. If you have not yet made your gift to the Kehila campaign, please consider doing so now. Your name will be read at this initial dedication and your plaque will be unveiled at the Fall ceremony. Yours just might be the gift that completes our dream house. For more information on the campaign, please call Judith Sussman at 212.982.0382, or Joan Beranbaum at 212.254.5740.

See you at the Temple on June 4th!

Funds from the Kehila Campaign will help us to complete our new home, create innovative programs, to engage our community and establish financial security for the future.

Contact: jberanbaum@dc37.net or jhs@nyc.rr.com

Matching Grants Fund: Limited goal, Limited time

Just as your public radio stations and television channels appeal to you for funds to cover overhead, these dollars frequently underwritten by a matching grant from a friendly foundation or individual, so does your Temple come to you with a similar and unusual appeal.

A generous "friend of the Temple" has offered a matching grant of up to \$50,000, on a dollar-for-dollar basis, if we can raise that amount by June 30. So far, we have raised \$32,000 which means \$64,000 for the Temple; however, if we can raise \$18,000 more, it will mean \$100,000 toward the Temple's operating costs.

For example, a contribution of \$700 will cover electricity/heating/air-conditioning for one week; \$300 will provide one year's maintenance of our website; and \$500 will cover costs of the photocopier for one month.

The deadline is June 30 to reach the \$50,000 goal, which will then be matched in its entirety by our "friend".

End-of-Year School Celebration & Confirmation

AT OUR

SHAVUOT SERVICE

Honoring our teachers
With School's *Bikurim* (class exhibition)
in the Social Hall

Tuesday, May 25th 6 pm



EAST END TEMPLE DONATION FORM

Please use this order form to send contributions to any fund(s) you choose. You may use the form below by filling out the information and sending it with your check to the Temple office, attention to the fund chairperson. Please use separate check for each fund.

Sisterhood Funds	<input type="checkbox"/> COLLATION/ONEG SHABBAT	(\$50)	Elizabeth Gross	(718) 335-8459
	<input type="checkbox"/> FLORAL FUND	(\$54)	June Morse	(212) 689-5557
	<input type="checkbox"/> HELENE SPRING LIBRARY FUND	(\$10 per listing)	Barbara Ringel	477-6625
	<input type="checkbox"/> TORAH FUND	(\$10 per listing)	Carole L. Hyman	477-6444
	<input type="checkbox"/> SIMCHA FUND	(\$10 per listing)	Temple Office	477-6444
	<input type="checkbox"/> FOOD FOR FAMILIES	(\$18 per listing)	Temple Office	477-6444
	<input type="checkbox"/> FOOD FOR FAMILIES DAY SPONSOR	(\$250)	Temple Office	477-6444

The following funds are handled by the Temple Office - 245 East 17th Street NYC (212) 477-6444

<input type="checkbox"/> EET BROTHERHOOD YOUTH ENDOWMENT FUND (EETBYEF)	(\$10 per listing)
<input type="checkbox"/> EL EMET FUND	(\$10 per listing)
<input type="checkbox"/> FUND FOR THE FUTURE	(\$100 per listing)
<input type="checkbox"/> HAMERMESH MUSIC FUND	(\$10 per listing)
<input type="checkbox"/> RABBI'S DISCRETIONARY	(\$25 per listing)
<input type="checkbox"/> SARA A. SPENCER CHILDREN'S EDUCATIONAL RESOURCE CENTER	(\$10 per listing)

FROM (name of contributor): _____

MESSAGE: _____

RECIPIENT TO BE NOTIFIED, NAME & ADDRESS: _____

AMOUNT ENCLOSED: \$ _____

THE TEMPLE FAMILY

Get Well Wishes to

Naomi Forman, Babette Hollister, Murray Sanders, Lorraine Weiss

Well Done, Graduates

Congratulations to all our high school and college graduates and their families. Please let us know where your son or daughter is going to college or graduate school or where they will be living if they are going into the work force. We love our kids and want to send our greetings to them from time to time. Call or send a note to the office and give us the news about your kids.

Mazal Tov and Congratulations to

Adam Schartoff on becoming a Bar Mitzvah

Deepest condolences to

Murray Bittman and family on the death of Murray's brother, Max Bittman

REMINDER

Have you paid your Temple bill in full yet? Remember, we must receive your payment in full no later than May 31st, 2004.

EAST END TEMPLE BOOKCLUB

Your Mouth is Lovely by Nancy Richler on May 19th
Call to find location of meeting.

THANK YOU TO OUR APRIL USHERS

Paul and Helen Levine, Phil and Carolyn Gollance,
Paul Ringel, Paul Connuck, Mel Harris,
Jonathan Brenner, Ron Dubensky, Alice Schlesinger

BETH ISRAEL BOOK DRIVE

Hi, my name is Tracey Dubensky and I am organizing the **4th Annual Book Drive** on behalf of the Patient Library at Beth Israel Hospital. If you have any of the following kinds of reading materials which you no longer need, please consider donating them:

- Current magazines
- Paperback and hardcover books, current bestsellers
- Fiction, non-fiction, sci-fi, adventure, biography
- Children's books and magazines of any kind
- Foreign language books and magazines

A carton will be placed in the Social Hall of the Temple where you can drop off your donations through Friday, June 11th.

Thanks for helping the patients.

Notes to the Editor:

from a member

Kudos to Florence: I just got my mail and started to skim the April TEMPLET, but couldn't put it down. I don't know how you do it, but the TEMPLET gets better and better. The articles are terrific (I will have to go see "Broken Wings" now), the columns recounting the activities of different groups make me dizzy thinking of so much happening, and I feel so in touch with our leadership and other congregants.

Sharon: I know this is a team effort and it would never all come together without you – the illustrations, the typefaces, everything looks great.

Edna: Thank you as well.

EET CONGREGATIONAL DINNER HONORING EDNA ROSEN

FRIDAY, MAY 21, 7:30 PM

Join the East End Temple community for the entire evening beginning with Kabbalat Shabbat @ 6 pm

MAKE YOUR DINNER RESERVATIONS BY MAY 14!

✂ =====

East End Temple, 245 East 17th Street, New York, NY 10003

CONGREGATIONAL DINNER MAY 21, 7:30 PM

Member Adults @ \$18 _____

Non-Member Adults @ \$25 _____

Member's Children 6-13 @ \$9 _____

Non-Member Children 6-13 @ \$12 _____

Children under 6 (No Charge) _____

Enclosed is \$ _____ in payment for the May 21 dinner

CONTRIBUTIONS

We are grateful to the following people for their generosity:

EL EMET FUND

Yahrzeit Observances

Michael Arsham

for Rebecca and Herman Arsham

Joan Beranbaum & John Stackhouse

- for Bennett Stackhouse
- for Bessie Beranbaum
- for Samuel Beranbaum

Annabelle Cohen

for Birdie Brown

Marian Fish

for Eugene Cohen

Bess Gershenfeld

for Mollie Simon

Beverly Hynes

for Freda Lipp

Norma Kartzmer

for Erv Kartzmer

Michael Kirschbaum

for Hannah Kirshenbaum

Belle Persky

for Herman Persky

Sam & Anne Peskin

for Eli Peskin

Susan L. Rosenstock

for E. Walker

Weinberger Connuck Family

for Evelyn Moskowitz

Herman Weinblatt

For Bertha Weinblatt

Joan Beranbaum & John Stackhouse

- In memory of Leonard Spring's brother, Julian
- For complete recovery of Naomi Forman
- For complete recovery of Babette Hollister

Peggy Garrison

With gratitude for Shabbat Chavurah

HAMERMESH MUSIC FUND

Joan Beranbaum & John Stackhouse

To help the Cantor enhance the music program at East End Temple

SARA A. SPENCER CHILDREN'S EDUCATIONAL RESOURCE CENTER

Norma Kartzmer

Get well wishes to Babette Hollister

SIMCHA FUND

Marjorie and Judith Sussman

In honor of Bea Strasnick's birthday

HELENE SPRING LIBRARY FUND

Helen Doneger

In memory of my mother, Gertrude, brother, Irving, and sister, Ruth

Naomi Forman

To thank so many members of my Temple family for all their good wishes for my good health

Florence Herz

In memory of Leonard Spring's brother, Dr. Julian Spring

Babs and David Marcus

In memory of Samuel Garfield

Helen & Murray Sanders

In memory of Leonard Spring's brother, Julian

Steven, Geoff, & Debbie Sanders

Deepest condolences on the loss of Linda Polatsch's dear mother, Rose

Helene & Leonard Spring

- For the quick return to good health of Lorraine Weiss
 - In memory of Martin Chernick
 - Deepest condolences to Murray Bitman on the death of his brother, Max Bitman
 - In memory of Samuel Garfield
- Leonard Spring
- To thank the EET family for their outpouring of support at the time of his brother's death
 - With thanks to Larry Geisler for being such a good friend

TORAH FUND

Gertrude & Murray Bittman

Mildred Wachman & Family

Deepest sympathy to the Fox Family on the loss of Susan Fox

Florence Herz

Good wishes to Nancy Schneider for her continued recovery

Marcia & Michael Muskat

- In honor of Adam Scharoff on his Bar Mitzvah
- In honor of John Stackhouse's birthday

Shirley & Irving Roth

- In memory of Dr. Julian Spring
- In memory of Max Bittman

Charlotte Wilson

- For the speedy recovery of Thelma Feldheim
- In memory of Max Bittman

COLLATION/ONEG SHABBAT FUND

Bea Strasnick

In honor of her 93rd birthday

FUND FOR THE FUTURE

Naomi Forman

- In memory of my husband, George, and my son, Bobby
- To thank my Temple family for all their good wishes for my good health

David & Babs Marcus

In memory of Julian Spring

Nancy & Larry Schneider

- In memory of Leonard Spring's brother
- To thank Rabbi Adelson for his visit during my recuperation
- To thank all my EET friends for the well wishes, notes & contributions during my recuperation from recent surgery

RABBI'S DISCRETIONARY FUND

Samuel Finkelstein

For Lynn and David's new home

David Hochman & Genie Siegler

To thank Rabbi Adelson & Cantor Kobilinsky for their extraordinary personal commitments to the Bar Mitzvah preparations of our son, Joel

Marilyn Sobelman

In memory of Aaron Sobelman

FLORAL FUND

Richard and Matthew Bengloff

In memory of grandmothers and great-grandmothers, Rebecca Bengloff and Anna Goldman, on their yahrzeits

Jonathan C. Rich

In honor & celebration of my aunt, Bea Strasnick's, 93rd birthday

FOOD FOR FAMILIES

Norma Hirsch

In memory of Esta Kersner

Michael and Susan Kartzmer

In loving memory of Erv Kartzmer on his yahrzeit

The Weinberger Connuck Family

In memory Dr. Julian Spring

Memorial Plaques Purchased for:
Frank Schneider and Evelyn Schneider, by Norma Hirsch

While we accept phoned-in contributions for our various funds, the surest way to ensure accuracy is to put it in writing and send it to the Temple office with your check.

Fran Kolin Has A Way With Time!

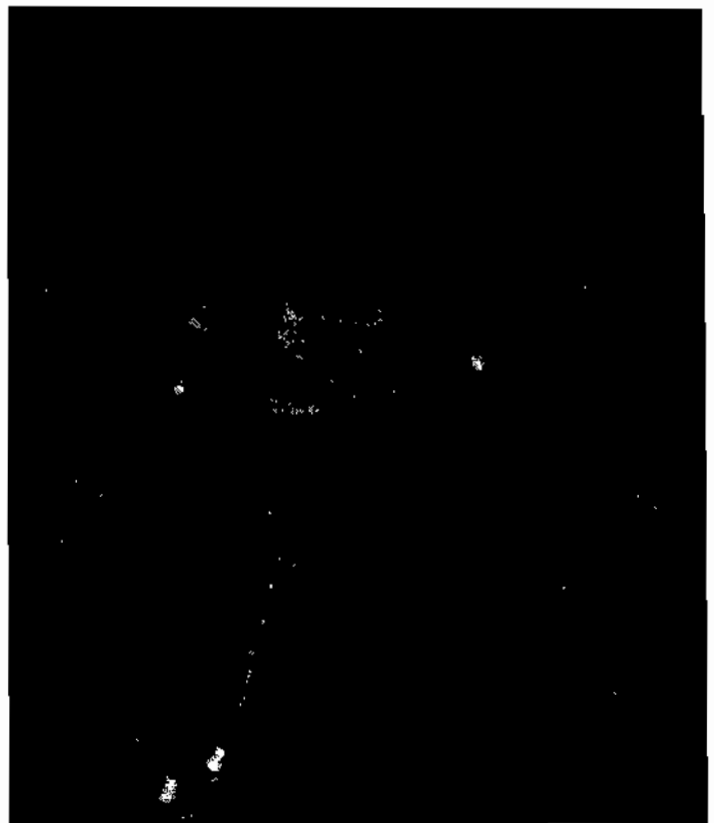
She is a middle child, raised religiously, though was not obligated to attend Shabbat morning services with her father and two brothers. No problem for studious and social Fran Kolin, of Ave. D and 12th Street, who was always busy making every moment count. Without skipping a beat, Fran accelerated from 2nd to 4th grade, placed in an intellectually advanced Junior High School program, studied Russian and French at Seward Park HS, earned two Early Childhood Degrees at CUNY and Hunter, respectively, and met Bobby Kolin, the hard-working electrician, who vowed to support her creative use of time. For thirty-two joyful years of marriage, Fran has embraced service to her community, family, and professional childcare and never taken time for granted.

EET Leadership

Thanks to Fran's eye for detail and fresh ideas, the EET Judaica Shop, three EET auctions, and an EET Bazaar all realized financial gain. After attending only her second EET Sisterhood meeting in 1992, she was unanimously chosen to be Sisterhood President, a position she held for 12 years. Fran's leadership style of never asking anyone to do anything she would not do herself has enabled her to create and drive many of EET's most enduring socially conscious programs for the homeless, like 'Food for Families' (aka Sandwich Saturday), and 'The Cold Weather (knitting/crocheting) Project'. Fran continues to commit herself actively to Judaism and Jewish values. She serves on the EET Board, the Sisterhood Board and on the Membership, Ritual and Sisterhood Committees.

All in the Family

A measure of Fran's devotion to family are the accomplishments of Fran's children, Ben ("My computer genius guy") and Stephanie, ("My wandering Jew"). Ben completed MIT in 3 ½ years and turned his sights to Silicone Valley, Ca. Today, at 28, he is a Senior Software Engineer and newlywed to Monique, a Nursing School graduate student. Stephanie graduated Brandeis University Phi Beta Kappa and at 25, is an HUC Rabbinic student making a name for herself in and around the country. She conducted High Holy Day 2002 services in Wyoming and will be the 2004 summer rabbi for a synagogue in Fairbanks, Alaska. With a nod to Fran's lust for life and laughter, the Kolins never miss an opportunity to share precious time and well-timed punch lines with one another. Plans are already in the works for a 2004 Labor Day family reunion in New York.



Fran uses her parenting talents to the fullest as suggested by her early years as a babysitter, day camp counselor and play-group coordinator, and her more immediate work in private childcare. Her deeply held beliefs regarding the privilege and responsibility of raising and respecting children has always struck a responsive chord with the many parents whose children have been in her care. Not your typical service provider, Fran receives Mother's Day cards from many of her young charges, some of whom she has helped raise for 14 years. Fran's passion for children and her taste for strong social networking placed her at the forefront of her children's elementary public school parent-sponsored initiatives. In addition to Fran being the P.S. 40 P.A. President (twice), she ran four major auction fundraisers and created 'Kids In Need', a take-home meal program for 'Hotel' children. Catch Fran, if you can, on most Friday nights after EET Shabbat services. She's the one holding court at the EET Judaica Shop and having the best time!

We'd love to hear your story. Call Marcia Muskat 212/477-6444 and tell her that you are ready to share.

May 2004

East End Temple

Sunday	Monday	Tuesday	Wednesday	Thursday	Friday	Saturday
2 10:30 AM Chevrat Nashim 11:00 AM 7th gr Fam Prog	3	4 9:30 AM Melton Mini School 4:00 PM Religious School 8 PM Chavot	5 4:00 PM Religious School 7:00 PM Adult Ed w/Sam Rosen	6 4:00 PM Religious School 6:00 PM Youth Group	7 6:00 PM Shabbat Services w/6th & 7th gr + Dinner	8 10:00 AM Shabbat Chavurah: Torah Study
9 10:30 AM Chevrat Nashim Mother's Day Lag B'omer	10	11 9:30 AM Melton Mini School 4:00 PM Religious School 7:00 PM Sisterhood Meeting 8 PM Chavot	12 4:00 PM Religious School 7:00 PM Adult Ed w/Sam Rosen 7:00 PM Youth Ed Only	13 4:00 PM Religious School 5:30 PM 7th grade meeting 5:30 PM Confirmation Class	14 6:00 PM Tot Shabbat 7:30 PM Shabbat Services	15
16 10:30 AM Chevrat Nashim 2:00 PM Art Exhibition & Auction	17 7:00 PM Exec. Meeting June Temple Closing	18 4:00 PM Religious School 6:00 PM Melton Mini School 8:00 PM - 9:30 PM Melton Mini School Graduation 8 PM Chavot	19 4:00 PM Religious School 7:30 PM Book Club	20 4:00 PM Religious School 5:30 PM Conf. (9th gr) 6:00 PM Youth Group	21 6:00 PM Shabbat Services 7:30 PM Congregational Dinner honoring Edna Rosen	22 10:00 AM Shabbat Chavurah: Torah Study
23 10:30 AM Chevrat Nashim 10:30 AM Rosh Chodesh	24	25 6:00 PM Shavuot & Confirmation w/Bikurim & school celebration, honoring our teachers 8:30 PM Tikun Leil Shavuot: Special Study + Light Dairy Supper	26 10:00 AM Shavuot & Yizkor Services Office Closed	27	28 7:30 PM Shabbat Services	29
30 10:30 AM Chevrat Nashim	31 Office Closed Memorial Day					

MORAN'S
C H E L S E A

212.627.3030 • fax:212.741.3025
email:moransnyc@aol.com • www.moransnyc.com
146 tenth avenue • new york, ny 10011