

SEPTEMBER 2004
ELUL 5764/TISHRI 5765

**SHABBAT, HIGH HOLY DAY AND
HOLIDAY SERVICES**

Friday 3 @ 6 pm

Saturday 4 @ 10 am

Shabbat Chavurah: Torah Study

Friday 10 @ 7:30 pm

Tot Shabbat, 6 pm

Saturday 11 @ 10 am

Bar Mitzvah of Matthew Gottesman

Friday 17 @ 6 pm

Saturday 18 @ 10 am

Shabbat Chavurah: Torah Study

Friday 24 @ 7:30 pm

Kol Nidre

Saturday 25 @ 10 am

Yom Kippur

Wednesday 29 @ 6 pm

Erev Sukkot

Thursday 30 @ 10 am

Sukkot

TEMPLE ACTIVITIES

Open Houses

Wednesday 1 from 5 - 8 pm

Thursday 9 from 5 - 8 pm

Board Meeting

Tuesday 7 @ 7 pm

Back to School:

Meet the Teachers

Wednesday 8 from 7 - 8 pm

Slichot Study & Service

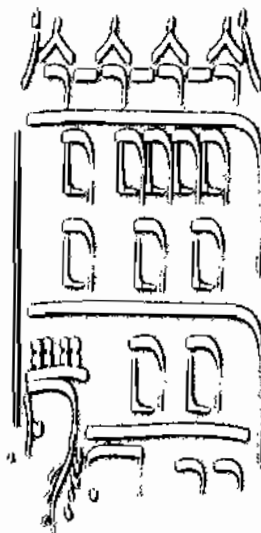
Saturday 11 @ 7:30 pm

Chevrat Nashim

Sunday 26 @ 10:30 am

Sukkah Decoration

Wednesday 29 @ 5:30 pm



Templet

HIGH HOLY DAY DATES
2004 - 5765

Erev Rosh Hashanah

Wednesday, September 15 @ 7:30 pm

Rosh Hashanah Morning Services

Thursday, September 16 @ 10 am

Both @ NYU Dental School Auditorium

Afternoon Services @ 17th St. Temple

2:00 pm - Family Service

2:30 pm - Tot Service

3:00 pm - Open House

4:15 pm - Tashlich @ Stuyvesant Cove

& 20th Street

Kol Nidrei

Friday, September 24 @ 7:30 pm

Yom Kippur Morning Services

Saturday, September 25 @ 10 am

Yizkor Services @ 12:45 pm

All three @ NYU Dental School Auditorium

Afternoon Services @ 17th St. Temple

2:30 pm - Family Service

3:30 pm - Study Session

4:30 pm - Afternoon Service

5:30 pm - Torah Service

6:00 pm - Neilah

6:30 pm - Havdalah

EAST END TEMPLE

Congregation El Emet

245 East 17th Street

New York, NY 10003

ph: 212-477-6444

fax: 212-477-6619

www.eastendtemple.org

info@eastendtemple.org

Rabbi David Adelson

Cantor Hayley Kobilinsky

Karen Feuer, President



Elul 5764

September 2004

Dear Friends

The Perpetual Moment

Is there an event in your regular schedule, be it weekly, monthly, or even yearly that, it seems, is always here? You might find yourself asking, Why is it always Monday morning? Or, when mixing a bowl of sweet smelling *charoset*, and with the guests about to arrive, you might feel that somehow, it is always Passover.

I know for me, and perhaps for many of us, the High Holidays can feel like such a perpetual moment, in a far more serious than sweet way. For all of us, the High Holidays are intended to inspire serious self-reflection. We are called to do *tshuva*, translated as either *return* or *repentance*. We are called to right ourselves, to get back on the path. As we all know, finding our right path and returning to it when we lose the way is a complicated process, and not easily accomplished in just the period around Rosh Hashanah and Yom Kippur. Adin Steinsaltz, a great Israeli Talmud scholar and mystic describes *tshuva* this way in his book "The Thirteen Petalled Rose":

"Repentance does not bring a sense of serenity or of completion but stimulates a reaching out in further effort. Indeed, the power and the potential of repentance lie in increased incentive and enhanced capacity to follow the path even farther... In this manner the conditions are created in which repentance is no longer an isolated act but has become a permanent possibility, a constant process of going toward..."

In other words, *tshuva* is an ongoing process, and life-long.

The Perpetual Work of Return

We may find ourselves in Rosh Hashanah or Yom Kippur services feeling like it is always the High Holidays, and we are perpetually being called on to repent, do internal work, return to the path. And, as Rabbi Steinsaltz suggests, it is always the High Holidays, in that pushing ourselves to be reflective on the Holidays will only help us learn to be reflective and growing all through the year.

The work of *tshuva* is the work of not accepting our lives, our relationships, and the world we live in as they are. This is the work of sensing in our depths what is the path we are on, and how can we overcome obstacles and pursue that path more vigorously. This path may involve uncovering a sense of mission in our work, being more truthful in our relationships, finding more peace amidst our chaotic lives, raising children to be good people, or even deepening our relationship with God. The experience is different for each of us, but we all share the obligation and the opportunity to do *tshuva*. If we take the work of the High Holidays seriously, we realize that in fact we are always at Rosh Hashanah and Yom Kippur in the sense that we are always being called to try to return to our true path.

It is within our grasp to move always toward growth, to our true path, toward deeper meaning in our lives. May we all be blessed with strength for this perpetual, wonderful journey.

In hope,




Israeli Intelligence

In 2002, Israelis registered 1,046 patents in the United States, or 174 per million residents. The figure places Israel third in the world, behind the United States and Japan, in per capita figures.



East End Temple
TEMPLET
 245 East 17th Street
 New York, NY 10003

Editor **Florence Peloquin**
 Production **Sharon Shemesh**



PRESIDENT'S PERSPECTIVE

Karen Feuer

On August 11, I attended the Union for Reform Judaism's *Leaders' Workshop*. Advertised as an evening for new leaders (and those who would like a refresher), it promised practical tips to involve more people in congregational life, ensure an understanding of Temple finances, and provide techniques to make meetings effective. It was a valuable opportunity and



given my inexperience as a congregational leader, it was a program I couldn't miss. The speakers provided clear and concise pointers to ensure good business practices and facilitate purposeful and meaningful meetings. While best practices in congregational life do not necessarily differ very much from those evidenced in secular life, the notion of "minhag"- the practices that a congregation understands as custom and are the result of a rich and enduring history may not always be "best."

Those customs, not explicitly written in either a mission or vision statement but nevertheless owned by a congregation for reasons of time, continuity or simply because "that is the way it is," are those that inspire both our deepest commitment and highlight the need for greatest change. To know the "minhag", is to be enveloped in the familiarity and comfort of a community, which has sustained itself for over 50 years. It is also this "minhag" that inspires a re-imagining of practices that may not have earned the same feeling of fondness in everyone. This balance – maintaining "minhag" while adapting customs to the current congregation are at the intersection of today and tomorrow. High Holiday rituals and practices may best illustrate the delicate balance required to both maintain those most treasured traditions and evidence the possibility of initiating new and potentially as enduring "minhag."

The Ritual Committee has envisioned and crafted small changes to our High Holy Day Services. As an emergent leader of East End Temple, I relish the freedom that such changes might bring to enable me to set a course for my own leadership of EET. I also acknowledge the loss that others may feel with a perceived breach of current "minhag." I suggest that while change is never easy, we are a congregation that finds strength in its ability to reinvigorate itself and maintain the vitality so crucial to sustaining membership and worship. I look forward to participating in practices that reflect the "minhag" of EET, both of yesterday and in anticipation of tomorrow.

L'Shanah Tovah – A healthy and Happy New Year.

Karen Feuer Contact: president@eastendtemple.org

CANTOR'S

Hayley Kobilinsky

Greetings! This September we begin anew in many ways: Our Hebrew School will resume, and our halls will be filled with the sounds of learning. The High Holidays give us another opportunity to turn over a new leaf. Our holiday cycle turns again, and brings us back to familiar melodies, celebrations, time to reflect, and time with family. Our East End Temple family is no exception.



At High Holidays this year, we have a special bonus. I have recorded several congregational melodies that will be used multiple times during the services. These melodies have been burned onto CDs and will be coming to you, complete with Hebrew and transliterations, which have been completed by Pearl Polifka, and should make it easier for you to participate at the High Holidays. Our goal is for you to be moved by the timeless melodies and be able to sing along. We hope you enjoy!

I look forward to seeing you all at services and at Hebrew School. I will once again be serving as music specialist to our Wednesday students (Gan through 3rd grade), and teaching the 6th graders Torah cantillation and their blessings in preparation for B'nei Mitzvah! As always, the 7th graders will work one-on-one with me learning their Torah and Haftarah portions. Our East End Temple Volunteer Choir will soon regroup, and we are accepting new members, as well as welcoming back our devoted singers. Remember, you don't need to be able to read music, or sing well enough to be the next American Idol. If you love to sing, that's enough.

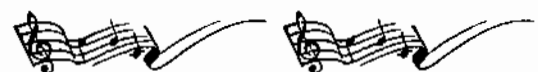
We also welcome back our accompanist, Alex Mekinulov, at the piano, and look forward to making music together, especially when we are joined by Joe Rutkowski on clarinet!

In closing, I would like to say congratulations to Saar Shemesh and her family on the occasion of her Bat Mitzvah this August! This month we will also celebrate the Bar Mitzvah of Matthew Gottesman! Good luck!

Musically yours,

Hayley

Contact: cantor@eastendtemple.org



EDUCATOR'S CORNER Hagit Halperin

With Hagit in Israel to attend her father's funeral, this column is guest-written by Suellen Eshed, VP Youth and Education.

Dear Parents and
Congregants,



I hope you had a wonderful summer. It's amazing that it is now almost over and we are getting ready for the High Holy Days and school. We have a great year planned for our Religious School students this year. Please mark your calendars with these key dates:

- **On Wednesday, September 8th**, we are inviting all families, member and non-member alike, to come Meet the Teachers at our Religious School Open House between 7:00 and 8:00 p.m. We will introduce our teaching faculty, present an overview of the curriculum and welcome any questions about our upcoming school year. Whether you have children that are already enrolled, are still considering registration or know people who are looking for a great Religious School for their children this promises to be a most informative evening. Refreshments will be served afterwards, so that you have more of a chance to "schmooze".

- **School starts the week of September 20th**, with the first 4th through 7th grade class on Tuesday, September 21st (4:00 to 6:00 p.m.) and the first Gan through 3rd grade class on Wednesday, September 22nd (4:00 to 5:30 p.m.). The first of the bi-monthly Confirmation classes will be held on Thursday, September 23, from 5:30 to 7:30 p.m. and includes dinner. Additional information about schedules and school policies and procedures can be found in the Student Handbook, which will be distributed to all families prior to the start of school.

- **Family Rosh Hashanah Services** will be held on Thursday, September 16th at 2 pm for ages 5 - 11 and a Tot Service will follow at 2:30 pm for ages 2 - 5.

- **We will decorate the Sukkah** on Wednesday, September 29th at 5:30 pm. All are welcome to help us make special decorations and string and hang fruit and gourds in the front of the Temple. We have many exciting, fun and educational activities planned throughout the year! We are looking forward to seeing you and your families!

L'Shanah Tovah!

Suellen Eshed

Contact: educator@eastendtemple.org

KOSHER COMMUNIQUE

Rumbling through the streets of London's religious Jewish neighborhoods is an ice-cream truck blaring "Hava Nagila", selling kosher ice cream. (Vanilla only, for now.)

An Israeli children's book illustrator, Tirza Peleg, designed the truck. Against a green background, the artist drew teddy bears eating ice-cream cones. The truck, dubbed "Uncle Doovy" by the kids, plays Hebrew melodies instead of the usual "Old McDonald Had a Farm". The truck owner reports a successful "scoop" of business.

Kosher Campbell's?

Marketing to a growing demand, Campbell's Vegetarian Vegetable Soup is the latest all-American product to go kosher. It is now certified kosher by the Orthodox Union and carries the U label on the can. The Northeast sector of the country is the strongest area of distribution. Many consumers see the U label comparable to the Good Housekeeping Seal of Approval.

Kosher Kraft?

Kraft Foods is also reaching out to kashrut-observing consumers. Its Web site, www.kraftfoods.com/kosher lists many of its kosher products which are largely under OK rabbinic supervision and offers dairy recipes using Kraft products.

Kosher Baseball Cards?

Jewish Major Leaguers now comprise a set of 142 baseball cards featuring Jewish ball players such as Hank Greenberg, Sandy Koufax, Cal Abrams, and Sam Greenberg. A dedicated baseball fan, Martin Abramowitz, researched the photos, statistics and bios of all 142 players, starting in 1871, then made a deal with mega-baseball card producer, Fleer Trading Cards, for distribution. They are on the market now for collectors of all ages.

Editor's note: The above three news bites were extracted from Hadassah Magazine.

CHARLES S. SALOMON

RIVERSIDE MEMORIAL CHAPEL*

180 West 76 Street New York, NY 10023 212.362.6600

Our Service Is Available in the Temple, Home, or our Chapel

*is a subsidiary of Service Corporation International
1929 Allen Parkway, Houston, TX 7709 (713) 522-5141

SISTER TO SISTER Fern Stampelman

Though hard to believe, September is here with Open Houses, a return to religious school and High Holiday Services. On behalf of Women of Reform Judaism, welcome back from your summer respite and best wishes for a sweet New Year.

As part of the important information you receive this fall, be sure to be on the lookout for WRJ's annual dues letter and RSVP. WRJ is an important arm of the Temple, servicing both membership and the community at large. Your participation on this level is of the utmost importance. Dues continue to remain constant at \$25.00 per year while women new to EET enjoy a one-year complimentary membership. We look forward to hearing from EVERYONE.

HERE IS A LIST OF THE SEASON'S FIRST EVENTS OF WRJ AT A GLANCE:

- Sunday, October 3rd @ 1 pm – Food For Families
- Tuesday, October 5th @ 7:30 pm – Sisterhood Meeting; All are welcome
- Sunday, October 17th 10:30 am – 12 Noon – Presentation and Book Signing by Linda Hetzer, EET member and co-author of Moving On. Light brunch included. Open to all members of the Temple. \$5.00 per person for both program and light brunch. To reserve your space, please call Sharon 212.477.6444 or contact Fern sfhstamps@aol.com.

And, please mark Sunday, November 21st on your calendars when Rabbi Jen Krause will return to EET with a timely topic TBA.

As always, be sure to check other sections of the Templet for the latest theater, library and Judaica Shop activity. Thank you for supporting us!

Shanah Tovah...

WRJ; Sister to Sister
Fern

Contact: sfhstamps@aol.com

JUDAICA SHOP FINDS Fran Kolin

In New York, there are certain things that are harbingers of fall: a few leaves starting to change color, bright white looseleaf paper in huge piles, and the arrival of Jewish New Year's cards in the stores. The Judaica Shop has four varieties, (after all, we're not Hallmark!), all reasonably priced at \$4.00 for a pack of eight cards and envelopes. Send your good wishes for a great New Year, and support your Temple at the same time. See you in September.

Fran

Contact: thekolins@worldnet.att.net

LIBRARY BUZZ Barbara Ringel & Beth Labush

The Library Committee met over the summer as we began to plan for next winter's visit by a Jewish author. Last January's talk by Edith Velmans was so successful that we hope to make this type of afternoon of reading, book signing and refreshments an annual library event.

We also discussed ways to encourage more congregational use of our beautiful library. We've had an extremely dedicated group of volunteers preparing the books under the guidance of librarian Marsha Labovitz, and we're ready for business! We envision our collection being a resource as you plan your family's life cycle events – weddings, new babies, b'nei mitzvahs – and celebrate Shabbat and the holidays.

Barbara and I are especially proud of our growing collection of Jewish cookbooks, which may help families start their own holiday traditions or give you an idea for a new recipe to add to your family's tried-and-true dishes.

The instructions for borrowing books are by the window. So stop by, browse, sit awhile and enjoy your library.

Beth and Barbara

Contact: Bringel@aol.com or BKLNYC@aol.com

5764/2003-2004 WOMEN OF REFORM JUDAISM ART CALENDAR

Now available at the Temple office
Limited quantities @ \$15 each

EAST END TEMPLE BOOKCLUB

The Book: The Family Markowitz
The Author: Allegra Goodman
The Date: October 13th
The Place: call for location 212.477.6444

November book is: The Coffee Trader by David Liss

Memorial Plaques purchased for:

- Harry Frankel, Abraham Sobel and Rhoda Sobel, by Barbara and Richard Frankel
- Seymour Heinberg, by his wife, Beatrice Heinberg
- Terry Gordon, by Howard Kopelson and Helen Kopelson



THE TEMPLE FAMILY

Congratulations and Best Wishes to

Elizabeth Ginsburg, who will be attending Brandeis University this fall

Deepest Condolences to

- Miki, Jelena, Adam and Lili Blumenberg, on the passing of Miki's mother
- Lee Anne Bear, Mark and Jeremy Gurvitz, on the passing of Lee Anne's father, Ervin Bear
- Hagit Halperin, our educator, and her family on the passing of her father

Welcome New Members

- Fang and Marc Block
- Esther and Daniel Diamond
- Barbara and Richard Frankel
- Cynthia Kern, Jane Boisseau and their son, Jeremy Kern
- Fred Kolikoff
- Henry Kramer and Cindy Au-Kramer
- David Lebowitz and Kate Kang
- Cheryl and Neil Pinchuk and their son, Alec
- Muhamed Saric and Amy Kates and their sons, Malik and Elias
- Peter Seligman and Karen Friedman
- Nathan Siegel and Krystyna Frenkel

THE EET 2004 OPEN HOUSE

Sunday, August 29 (4-7 pm)

Wednesday, September 1 (5-8 pm)

Young Adults Especially Welcome

Thursday, September 9 (5-8 pm)

INVITE YOUR FRIENDS AND NEIGHBORS TO:

- TOUR OUR NEW HOME
- MEET OUR WONDERFUL RABBI
- GET TO KNOW US BETTER
AND
- ENJOY DELICIOUS REFRESHMENTS

Call Open House co-chairs:

Lisa Binder (212) 473-0751 or

Frances Lee (212) 254-6502

and volunteer to meet and greet our guests.

The Membership Committee

PASS IT ON!

THANK YOU TO OUR AUGUST USHERS

Richard Bengloff, Miki and Jelena Blumenberg,
Merle and Jonathan Brenner, Suellen Eshed, Bette Levy,
Karen Feuer, Edna Rosen,

R E M I N D E R

High Holy Day Tickets:

We will mail tickets during the week of September 6th, to those members who have paid at least 50% of their membership dues, security assessment, and all applicable tuition charges by that date.

We credit payments to your account as follows:

1. Any 2003-04 balance due, if applicable
2. Religious School fees
3. Membership Dues
4. Security Assessment
5. Building Fund
6. High Holy Day Pledge
7. ARZA

High Holy Days Ticket Prices:

Rosh Hashanah and Yom Kippur \$360

(One ticket for all services -- no single tickets sold)

Relatives of Members who do not live in

Manhattan (all services)

\$180

Book of Remembrance:

Thanks to those of you who have submitted your listings. **If you have not yet replied, we have extended the deadline to September 10th.** The Book of Remembrance is an important tribute to beloved family and friends during the High Holy Days. Call the office with any questions, or if you need another listing.

DOWNTOWN KEHILLAH PROGRAM

In order to enrich and deepen Jewish life in downtown Manhattan, the Downtown Kehillah brings together the organized community in a series of study courses.

Programs are given at the Sol Goldman-YM-YWHA, 344 East 14th Street. Courses include:

"How We Live Today: Making Sense of Jewish Diversity" and "Judaism in a Time of Crises: Can One Person Make a Difference?"

To get more information, call Harriet S. Schimel, 212.780.0800 ext.276 or melton@edalliance.org

CALLING all PHOTOGRAPHERS

...Is there a professional or ex-professional photographer in the house? We need to take new photos for the updated web site we are creating. Can you help? Please contact Edna Rosen at the Temple office.

FOOD FOR FAMILIES Marian C. Fish

Our First Date: Kickoff Sunday, October 3
in the East End Temple Social Hall. This is the start of a season of important social action.

Food For Families is East End Temple's social action program where we get together to prepare meals for the hungry in our city. Each single meal includes sandwiches, fruit, drinks, dessert and cookies, all nourishing and delicious. The meals are picked up by a City Harvest truck and brought to pantries where they are distributed within hours.

How does Food For Families work?

One Sunday each month from October through March, FFF is held between 1 and 3 pm. We purchase all food products in bulk at discount price clubs. Participants bring the bread and fruit, and everyone spends about two hours preparing meals. The coordinating committee is composed of Cynthia and Ron Dubensky, Marian and Robert Fish and Babette Hollister who do all the purchasing and set-up.

What do you do at Food For Families?

You can: make sandwiches (peanut butter and jelly or cheese); set up stations of food; fill bags with delicious food; meet new people and load the City Harvest truck.

Who comes to Food For Families?

Temple members and friends are all welcome to join us. Children old enough to help are welcome. FFF is a great activity for teens who are looking for community service opportunities.

Funding comes from the East End Temple Sisterhood and donations. Last year we initiated a Sponsor for the Day program that was an enormous success. To be a Day sponsor, a donation of \$300 is required (which is less than actual cost.) All of this money is used to purchase food. In addition, donations can be made by sending your check to the FFF Fund at EET. Donations are listed monthly in the Temple. A minimum contribution of \$18.00 is requested.

What you need to know for the 2004-2005 season:

- Dates: Sundays: 10/3, 11/7, 12/12, 1/9/05, 2/6 and 3/6
- Time: 1 – 3 pm
- Place: East End Temple Social Hall
- Bring: Four loaves of bread (no soft white bread), and 16 pieces of fruit
- Wear: A hat or cap, please! (NY Health Dept. rule)

We hope that all of you can join us for this rewarding program that benefits the neediest members of our community promptly. For more information, please contact Marian Fish or the Temple office.

Contact: mfish1211@aol.com



EAST END TEMPLE DONATION FORM

Please use this order form to send contributions to any fund(s) you choose. You may use the form below by filling out the information and sending it with your check to the Temple office, attention to the fund chairperson. Please use separate check for each fund.

Sisterhood Funds	<input type="checkbox"/> COLLATION/ONEG SHABBAT	(\$50)	Elizabeth Gross	(718) 335-8459
	<input type="checkbox"/> FLORAL FUND	(\$54)	June Morse	(212) 689-5557
	<input type="checkbox"/> HELENE SPRING LIBRARY FUND	(\$10 per listing)	Barbara Ringel	477-6625
	<input type="checkbox"/> TORAH FUND	(\$10 per listing)	Carole L. Hyman	477-6444
	<input type="checkbox"/> SIMCHA FUND	(\$10 per listing)	Temple Office	477-6444
	<input type="checkbox"/> FOOD FOR FAMILIES	(\$18 per listing)	Temple Office	477-6444
	<input type="checkbox"/> FOOD FOR FAMILIES DAY SPONSOR	(\$300)	Temple Office	477-6444

The following funds are handled by the Temple Office – 245 East 17th Street NYC (212) 477-6444

- EET BROTHERHOOD YOUTH ENDOWMENT FUND (EETBYEF) (\$10 per listing)
- EL EMET FUND (\$10 per listing)
- FUND FOR THE FUTURE (\$100 per listing)
- HAMERMESH MUSIC FUND (\$10 per listing)
- KEHILA FUND Joan Beranbaum 212/254-5740 and Judith Sussman 212/982-0382 (\$1800 minimum)
- MEMORIAL BOARD PLAQUE *current price \$600; new price effective 10/01/04* (\$720 each)
- SIMCHA TREE LEAF *current price \$180; new price effective 10/01/04* (\$236 each)
- RABBI'S DISCRETIONARY (\$25 per listing)
- SARA A. SPENCER CHILDREN'S EDUCATIONAL RESOURCE CENTER (\$10 per listing)

FROM (name of contributor): _____

MESSAGE: _____

RECIPIENT TO BE NOTIFIED, NAME & ADDRESS: _____

AMOUNT ENCLOSED: \$ _____

REGISTER NOW!

The URJ Greater New York Council of Reform
Synagogues

*Spend an extended Shabbat with Reform Jews from the
metropolitan area*

Nourish your soul and rejuvenate your spirit
ALL ARE WELCOME – Biennial newcomers and
veterans alike!

REGIONAL BIENNIAL

October 29 - 31, 2004
Hyatt Regency Hotel
Old Greenwich, Connecticut

Guests include:

- Rabbi Lennard R. Thal, Senior Vice President,
Union for Reform Judaism
Rabbi David Saperstein, Director, Religious Action
Center of Reform Judaism
Dale Glasser, Director, URJ Department of
Synagogue Management
Kathy Kahn, Associate Director, URJ - CCAR
Commission on Outreach and Synagogue
Community
Rabbi Andrew S. Davids, Executive Director,
ARZA
Dr. Alyssa Gray, Assistant Professor of Codes and
Responsa Literature, HUC-JIR

- Inspiring worship
- Outstanding workshops
- Pre-Biennial study Kallah on Thursday and
Friday with Robert N. Levine, Senior Rabbi of
Congregation Rodeph Sholom, NYC
- Special Forum for Educators and Youth
Workers

DEBBIE FRIEDMAN
Artist-in-Residence
Gala Concert Saturday Night

For a registration form and more information, call
GNYCRS at (212) 286-8060 or visit
<http://urj.org/gnycrs>
Early bird registration ends October 15



OPINION:

Alan Dershowitz, a longtime staunch defender of Israel, has become even more confirmed in his spirited defense of the Jewish state and the entire Zionist enterprise. In his new book, "The Case for Israel" (available in our EET library), he takes on the increasingly vocal numbers of detractors.

Dershowitz contends that the international condemnation of Israel during the past few years is disproportionately severe and unwarranted. As a law professor at Harvard, he is particularly disturbed by the divestiture and boycott-of-Israel campaign on college campuses last year that singled out Israel as one of the worst offenders of human rights. After his interviews with students, he learned that it is no longer "cool" to be pro-Israel on campus; he feels we are losing the battle for the center on the campuses, away from the hard right and hard left.

Dershowitz is also troubled by the world opinion against Israel, mounting since 2000 and 2001 when Arafat walked away from Israel's offer of a Palestinian state at Camp David and Taba. Speaking from an on-site vantage point, he claims that the Palestinian movement has made a point of going after American college campuses. Also, that they have detoured the issue from the Arab-Israeli dispute into an Israel-Palestinian dispute in which Israel is Goliath and the Palestinians are David. "Cautiously optimistic" is the familiar phrase Dershowitz uses when he talks about the future of Israel. He believes, along with many others, that there will not be a two-state solution during Arafat's lifetime. Look for "The Case for Israel" in our library.

Florence Peloquin

The Jewish Health, Healing and Recovery

Network of JBFCS (Jewish Board of Family & Children Services) supports Jews and Jewish organizations with services that blend Judaic tradition and social work practices, including spiritual counseling, group counseling, mutual support groups, volunteer opportunities, consultation, information and referrals, printed materials, training, and workshops. Many of these services are free of charge.

JHHRN help Jewish individuals and communities facing issues of:

- * Serious illness or injury
- * End-of-life care
- * Loss and bereavement
- * Divorce and single parent programs and support
- * Addiction recovery
- * Making healthy life choices
- * Community care and support

For more information, call (212) 399-2685. Check us out on the web at www.jhhrn.org and www.jbfcs.org.

Rick Muskat Starts Small, Thinks Big!

It is a lesson as dated as his first baseball mitt and still as fresh as the morning news: to make the world a better place, first start in your own backyard, as Rick's father, Jack Muskat, would teach him. As a youngster, Rick took note of his paternal grandfather's ability in war time, to create a family-sustaining tailoring business and of his mother Elaine's insistence, despite close quarters, to have her elderly parents live with them. The value of attending to primary responsibilities before tackling bigger challenges was lived by his grandparents and parents. As husband, father, principal business owner and EET Board of Directors Trustee, it is a value much embedded in Rick Muskat's thinking and a roadmap for his active involvement in East End Temple.

Foundations

When Rick and high school sweetheart, Wendy, first married in 1973 they focused their immediate efforts on building a solid foundation for their children Danny, (now 27 and a National Account Manager in Rick's shoe business company), Jeni (now 25 and a National Account Manager for Ocean Pacific Boys Wear), and Jake (now 19 and a sophomore at U. of Michigan) and their extended family. During those child-rearing years, Rick's socially conscious ear was also listening to Helene Spring's annual Kol Nidre appeal for financial and hands-on support.

Futures

The defining moment came during Jake's Bar Mitzvah year (1998), when a real estate developer proposed to fulfill EET's dream of building a new permanent facility. Confident that his own house was *in order*, and concerned that the Temple's finances were *out-of-order*, like his father before him who was an EET Trustee and President of the EET Men's Club, Rick was now ready to step forward and commit to the community. He joined the Temple's new investment committee and drew upon his project management skills to create a step-by-step crisis management plan. In concert with a talented group of professional and Temple visionaries, including his wife Wendy, Rick facilitated the sale of the 23rd Street building; the renovation of the temporary quarters on First Avenue; and the purchase and restoration of EET's current home, an historic jewel of a building on East 17th Street. At the June 2003 EET Dedication, with his own family and Temple family looking on, Rick affixed the mezuzah to the new Temple doorpost and felt the power of his father's legacy.



Commitments

After five years on the EET building project, and despite the countless real estate, construction, architecture, design, legal and political problems presented, Rick continues to personally enjoy the fruits of his labor: the friendships and camaraderie of many skilled people with the courage of their convictions. Rick's commitment to family and community has also been realized at work and at play. Rick and brothers, Michael and Steve, partner the family shoe business, Deer Stags, and proudly employ Michael's daughter, Alison; Rick's son, Danny and Steve's son, Darryl. Rick and Wendy (a NYC LAB School college advisor and teacher) treasure their time together entertaining friends and family in their Atlantic Beach house, relishing the opportunity to meet new people while biking, golfing or skiing. By instinct and upbringing, Rick works hard to build family and community and "... gets back far more than he gives".



We'd love to hear your story.

Call Marcia Muskat

212.477.6444 and tell her that

you are ready to share.

Here are excerpts from a letter from Jerusalem from David Ehrlich, an old friend of East End Temple and of our rabbi. David is a native Israeli who served, as an artillery officer, worked as a journalist, is the author of two collections of short stories and is the owner of Tmol-Shilshom, a bookstore- café.

August 2004

Where We End and Where They Begin

I haven't written any of these letters for such a long time, that you might think the Intifada is over. It's not, but I have certainly reached a state of "normal life", so normal that I don't have the need to share my feelings with my friends in writing, a technique that helped me tremendously through the hard times. Moreover, I don't read the newspapers as I used to and rarely watch the news on TV.

In Jerusalem things have been relatively quiet for quite a while. We've even had a return of tourists – mostly Jews who have felt they avoided this dangerous spot for too long.

Things at Tmol-Shilshom are much better. I was sitting on the terrace with some of Dutch tourists recently, sharing with them an experience from almost ten years ago, soon after we opened

It was a beautiful fall evening in October '94 and we were having an evening of Love Poetry. We served red wine and everybody was feeling happy and a little high. All of a sudden there was a noise of shots outside. It came from the street and sounded like it was getting closer. We all lay down on the floor, not knowing what else to do. Two policemen, there by chance, stood at the windows, guns ready. We spent almost half an hour on the floor, even as the shots stopped, before some security people ordered us to clear the area. It turned out that two Palestinian terrorists were running up our street, shooting in all directions into the many restaurants of Nahalat-Shiva. Two people were killed, some wounded, till the terrorists were shot dead by soldiers.

What I wanted to tell my guests was that the Intifada was just one episode in a long-time drama and that living in Jerusalem has been a big challenge. In fact when I opened Tmol right by Zion Square in the city center, I was aware that the area had suffered terrorist attacks for decades and that I was likely to witness some myself.

Now the Dutch guys and I were sipping our white wine, enjoying the breeze. Then we heard shots from above. I looked up. The sky quickly filled up with the most beautiful fireworks in all different colors and forms. It was a surprise (to me, at least,) celebrating the opening of the summer street-fair. The fair is what the city has been doing for the past three years in order to restore life in the center, which has been largely affected by the Intifada. We all went out to watch the carnival in the evening sky, a bit anxious but relieved that it was only fireworks. How strange life is here. Fireworks are the exception, whereas shots and attacks seem to be the first thing you'd expect.

So here I am, telling them (and you) stories about life in Israel. I often wonder if I shouldn't be doing something a little bit more active than telling stories. What have I done in the course of the past three and a half years of violence? I've participated in some leftist demonstrations, wrote some letters, gave a few talks here and there and – how could I forget – went in the army for a couple of tours-of-duty, being on the staff of the military spokesperson. What will I say one day when the angels at the gate of the upstairs ask me what I did during the war? Will I tell them stories about how I told stories?

Politically, it all comes back to the same problems: the two leaderships won't talk, and the two sides are too far apart anyway, so an agreement seems as far away as ever. Moreover, the two peoples are in no place to trust each other's intentions right now. So what can one do except to wait for better days?

David

CONTRIBUTIONS

We are grateful to the following people for their generosity.

EL EMET FUND

Yahrzeit Observances

Donor names are given first

Rita Altszuler

Norman Altszuler

Michael Arsham

Zvi Zymbler

Nancy & Kenneth Berg

• Bessie Berg

• Milton Berg

Bess Gershenfeld

David Simon

Marjorie & Richard Gilbert

Bertha Goldberg

Eleanor Goldman

Eva Hilfstein Witek

Beverly Haynes

Alfred Lipp

Myrna Kronenthal

• Joseph Kronenthal

• Yetta Kronenthal

Helen & Paul Levine

Joseph Riesel

Augusta L. Packer

Samuel Landes

Anne & Sam Peskin

Phyllis Peskin

Barbara S. Reisfeld

George W. Reis

Herman Weinblatt

Harry Weinblatt

Marian & Robert Fish

In memory of Jack Goldsweig

Sarita Gupta & Mark Jofe

In memory of Naomi Forman

HAMERMESH MUSIC FUND

Myra Schiff

In appreciation

FLORAL FUND

Sharon & Shaul Shemesh

In celebration of their daughter Saar on her Bat Mitzvah

FOOD FOR FAMILIES

Marian & Robert Fish

Congratulations to the Shemesh Family on Saar's Bat Mitzvah

Florence Peloquin

• In memory of Hagit Halperin's father

• Congratulations to Sara Siegel on the marriage of her granddaughter, Matat to Ben Ami, in Israel

HELENE SPRING LIBRARY FUND

Doris Becker

In memory of Murray Sanders

Irma Forgosh

• In memory of Terry Gordon

• In memory of Naomi Forman

Babs & David Marcus

In memory of Frank Glickman

June Morse

• In memory of my mother, Sylvia L. Bloom

• In memory of my in-laws, Madeline & Jack M. Moskowitz

Shirley & Irving Roth

Mazal Tov to Saar Shemesh & her family on the occasion of her Bat Mitzvah

Steven A. Sanders

• In memory of Jane Engelberg

• In memory of Lesley Sanders

Helene & Leonard Spring

• Condolences to Hagit Halperin on the death of her father

TORAH FUND

B. Augusta Cosich

In memory of Naomi Forman

Helen Doneger

Deepest condolences to Mrs. Helga Bear and family on the passing of Ervin Bear, devoted husband, father & grandfather

Carole L Hyman

• Condolences to Hagit Halperin on the death of her father

• Congratulations to the Bat Mitzvah, Saar Shemesh! Sharon and Shaul, you must be so proud

Marcia & Michael Muskat

A speedy recovery to Helen Sanders

Ada & Herb Perlman

In memory of

- Sol Horowitz
- Yetta Goldberger
- Joseph Goldberger
- Wilfred Goldberger
- Eva Perlman
- Benjamin Perlman
- Harry Perlman
- Edythe Brandmak

Marjorie and Judith Sussman

Congratulations to Sharon and Shaul Shemesh in celebration of their daughter Saar's Bat Mitzvah

RABBI'S DISCRETIONARY FUND

Abby Drucker

- In memory of the joyous life of Murray Sanders
- In memory of the joyous life of Naomi Forman
- In honor of Saar Shemesh and the entire Shemesh family on Saar's Bat Mitzvah

SARA A. SPENCER CHILDREN'S EDUCATIONAL RESOURCE CENTER FUND

With deepest condolences to Hagit Halperin and her family on the passing of her father

Julie Livingston & Peter Gordon

Marcia & Michael Muskat

The Weinberger/Connuck Family

SIMCHA FUND

Shirley Lipton

Congratulations to Sara Siegel on the forthcoming marriage of her granddaughter Matat to Ben Ami in Israel

Beatrice Strasnick

Mazal Tov to Saar Shemesh on the happy occasion of her Bat Mitzvah

EEI YOUTH ENDOWMENT FUND

Marcia & Michael Muskat

With sympathy to Miki Blumenberg and family on the passing of his mom

FUND FOR THE FUTURE

Joan Beranbaum, John & Ross Stackhouse

In memory of our very special friend, Naomi Forman

Edna & Sam Rosen

In loving memory of Naomi Forman

While we accept phoned-in contributions for our various funds, the surest way to ensure accuracy is to put it in writing and send it to the Temple office with your check.

The exceptions are **Library Fund contributions**, which should go directly to Barbara Ringel, 431 East 20th Street - 4F, NYC 10010. Telephone number: 212.477.6625. Be sure to include your address, phone number and e-mail.

Thank you to
Matching Grant Fund donor
Dorothy Geller

September 2004

East End Temple

Sunday	Monday	Tuesday	Wednesday	Thursday	Friday	Saturday
			1 5:00 PM - 8:00 PM Open House	2 5:00 PM - 8:00 PM Open House	3 6:00 PM Shabbat Services	4 10:00 AM Shabbat Chavurah: Torah Study Torah Portion - KI Tavo Deut. 26:1-29:8
5	6 6:00 PM Exec Meeting 7:00 PM Board Meeting		8 7:00 PM - 8:00 PM Back to School: Meet the Teachers	9 5:00 PM - 8:00 PM Open House	10 6:00 PM Tot Shabbat 7:30 PM Shabbat Services	11 10:00 AM Bar Mitzvah of Matthew Gottesman 7:30 PM Silchot Study & Service Torah Portion-Nitzavim/ Vayelech Deut.29:9- 31:30
12	13 Labor Day Office Closed	14	15 7:30 PM Erev Rosh Hashanah Services @ NYU Dental Auditorium	16 10:00 AM RH Services @ NYU 2:00 PM Family Services 2:30 PM Tot Service 3:00 PM Open House 4:15 PM Tashlich @ Stuyve- sant Cove & 20th Street	17 6:00 PM Shabbat Services	18 10:00 AM Shabbat Chavurah: Torah Study Torah Portion-Ha'azinu Deut: 32:1-52
19	20 October Temple Closing	21 4:00 PM Religious School 7:00 PM YEC Meeting	22 4:00 PM Religious School	23 4:00 PM Religious School 5:30 PM 7th class/dinner 5:30 PM Confirmation Class	24 7:30 PM Kol Nidre Services @ NYU Dental Auditorium Torah Portion-Deut. 29:9- 14; 30:11-20	25 10:00 AM YK Services @ NYU 12:45 PM Yizkor @ NYU 2:30 PM Family Service 3:30 PM Study Session 4:30 PM Afternoon Services 5:30 PM Torah Service 6:00 PM Neilah 6:30 PM Havdalah
26 10:30 AM Chevat Nashim	27	28 4:00 PM Religious School	29 4:00 PM Religious School 5:30 PM Sukkah Decora- tion w/parents 6:00 PM Erev Sukkot Service	30 10:00 AM Sukkot Service Office Closed		

