

OCTOBER 2004
CHESHVAN/5765

SHABBAT SERVICES

Friday 1 @ 6 pm

Saturday 2 @ 10 am

Bat Mitzvah of Lili Blumenberg

Wednesday 6 @ 6 pm

*Simchat Torah & Consecration
w/ Gan & K class participation*

Thursday 7 @ 10 am

Yizkor

Friday 8 @ 7:30 pm

Tot Shabbat @ 6 pm

Saturday 9 @ 10 am

Bar Mitzvah of Michael Sturm

Friday 15 @ 6 pm

Saturday 16 @ 10 am

Bat Mitzvah of Jamie Brenner

Friday 22 @ 7:30 pm

Family Services @ 6 pm

Saturday 23 @ 10 am

Shabbat Chavurah: Torah Study

Friday 29 @ 6 pm

TEMPLE ACTIVITIES

Chevrat Nashim -

Sundays 3, 10, 17, 24 & 31 @ 10:30 am

Food For Families

Sunday 3 @ 1 pm

Book Club

The Family Markowitz

Wednesday 13 @ 7:30 pm

Congregational Dinner -Deli style

Friday 15 @ 7:30 pm

Rosh Chodesh - MOVING ON:

***A Practical Guide to Downsizing the
Family Home w/ Linda Hetzer***

Sunday 17 @ 10:30 am

Adult Ed - Kabbalah Program

Wednesdays 20 & 27 @ 6:30 pm

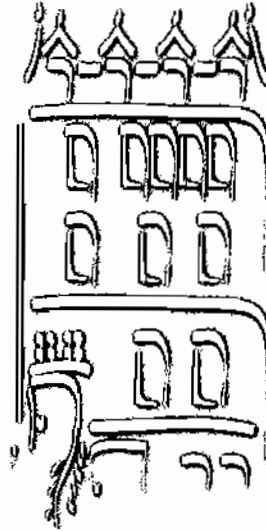
FOOD FOR FAMILIES

Sunday 3 @ 1 pm

ADULT ED - A KABBALAH FOR TOMORROW

Wednesdays, 20 & 27 6:30 - 8 pm

And 11/3, 10 & 17



Templet

A KABBALAH FOR TOMORROW

Finding Meaning through Mysticism

Join us for our fall Adult Education course using the book by Rabbi Arthur Green, "Ehyeh: A Kabbalah for Tomorrow." If you are interested in adding spiritual depth to your Jewish life, or are just curious about Jewish mysticism, this is the course for you. Copies of the book are available in the Temple office. We will meet Wednesdays from 6:30-8:00p.m., from October 20 - November 17.

For more information, see the rabbi's column inside.

EAST END TEMPLE

Congregation El Emet

245 East 17th Street

New York, NY 10003

ph: 212-477-6444

fax: 212-477-6619

www.eastendtemple.org

info@eastendtemple.org

Rabbi David Adelson

Cantor Hayley Kobilinsky

Karen Feuer, President



SEE BACK CALENDAR FOR ALL CLOSING

Tishrei 5765
October 2004

Dear Friends,

I am writing between Rosh Hashanah and Yom Kippur. This is an intense time of self-reflection. I am trying to look hard at myself and see what I will work on as a person and a spiritual leader in the coming year. I am also feeling wonderfully optimistic about East End Temple; energy is building, people are joining, the depth of confidence in what we can achieve as a community is increasing. We are getting more serious, and we are also starting to reap some of the fruits of our hard work.



Finding meaning through Mysticism

One of the highlights of our energetic fall season will be our adult education course "A Kabbalah for Tomorrow." As many of you know, I have been studying Jewish mysticism for a few years, and it has greatly informed how I think about God and our behavior in the world. On Yom Kippur, I will be talking about a paradigm shift in theology from the "vertical model" of God up above us, on high and distant, to an "internal model," where we plumb our own experience and our own heart to learn about transcendent truth and connection to what is bigger than us. It is the mystical system of Kabbalah that encourages this inward orientation to experiencing God or greater meaning. The rabbi who presents this paradigm shift is Arthur Green, who has written a wonderful book on understanding Jewish mysticism. His book "Ehyeh, A Kabbalah for Tomorrow" will be the text we will use in our course at East End Temple.

Kabbalah has received attention in the media in recent years because Madonna and other celebrities have shown interest in some of the more magical aspects associated with this most famous type of Jewish mysticism. During

most of the centuries of the medieval period, since the Zohar was written in 12th century Spain, kabbalah was a widely studied and influential movement in Judaism. It gained greatest popularity and influence in the Hasidic movement of Eastern Europe in the 18th and 19th centuries. It was painted as non-mainstream and taboo in modern times, when the Jewish community sought to reinvent itself as more rational and more palatable to the wider, mostly Christian, world.

The Resurgence of Jewish Mysticism

In recent decades there has been a resurgence of interest in Jewish mysticism. A notion of "oneness" in the universe — of a divine force that flows *through* all of us, instead of a faraway God who does things *to* us — has come to resonate with many people, and with many Jews in particular. Mysticism is being taught in rabbinical schools and at universities, as well as being marketed in new-age trappings, at places such as Madonna's chosen house of study, the Kabbalah Centre.

I believe Jewish mysticism has an enormous amount to offer serious liberal Jews. A mystical worldview only makes sense as a part of a whole Jewish life. For those of us who are looking to deepen our spiritual connections within liberal Judaism, I strongly encourage taking part in what I know will be a very stimulating class. Copies of the "Ehyeh, A Kabbalah for Tomorrow," by Arthur Green will be available for purchase in the Temple office, or in stores or online. The class will run five Wednesday evenings from 6:30-8:00 pm, starting on Oct. 20. For the first class, please read the introduction and chapters 1 and 2. The book is written for spiritual seekers and those who are simply curious about kabbalah, and I can't wait for us to dig into it together.

L'shalom,

Lishma: A Day of Traditional and Untraditional Jewish Learning

Responding to growing interest within New York's community for learning that crosses traditional boundaries, Lishmah will sponsor a one-day conference on October 31 at the Skirball Center for Adult Jewish Learning at Temple Emanu-El, 10 East 66th Street.

Over the course of the full day, participants will have the opportunity to study with over 100 teachers, artists, musicians, theorists, activists and rabbis (our Rabbi David Adelson will be one of the instructors.) The

program includes workshops, panel discussions, musical performances, lectures, film and study sessions.

To register or obtain further information call 1-866-2-LISHMA or log on to www.lishman.org

East End Temple
TEMPLET
245 East 17th Street
New York, NY 10003

Editor **Florence Peloquin**
Production **Sharon Shemesh**



PRESIDENT'S PERSPECTIVE

Karen Feuer

Rosh Hashanah celebrates the creation of the world and it is a time for reflection and self-evaluation.

It's a time when all living things are judged – It's the Day of Judgment.

This notion of judgment, which has multiple levels of meaning for anyone – resonates for me as the new President of a congregation. First there is the judgment of a "higher authority" as I examine my actions and ask forgiveness. Then there is the judgment – in some ways more intimidating of the congregation - as you examine my preparedness and worth to lead this Temple – a most sacred responsibility.

We celebrate this season – the beginning of the 10-day period known as the High Holy Days with the sound of the Shofar and holiday greetings. This past month the Board of Trustees has sent its own very unique New Year greeting to each and every one of you with a phone call – made for no other reason than to simply extend wishes of happiness and health for the year ahead. The feedback you have shared at receiving those messages has validated as well as surpassed the outcomes we were hoping for. You were touched and grateful to hear from us. What better way to connect you with Temple leadership than to personally reach out and extend greetings without asking for anything?

Of course the next time we call – don't be surprised if we ask you to volunteer for one or another events we've planned to continue to add vitality to our congregation, but for now members of the Board of Trustees were simply heralding the beginning of the High Holy Days and in doing so called to greet you!

I would be remiss if I didn't mention the HHD CD that you received with your ticket mailing. The idea took root in the Ritual Committee and was brought to fruition by many, but particularly Pearl and Bob Polifka, Hayley Kobilinsky and Peter Gordon. It is a gift to the congregation that enables our worship, singing and spirituality. Thank you for the music that now is more than a memory.

Again, with warm wishes for a happy and healthy New Year and season –

Karen Feuer

Contact: president@eastendtemple.org



CANTOR'S

Hayley Kobilinsky

The fall has arrived, and it has brought with it not just chilly air, but all the holidays that begin our new year, 5765, with a bash! As I write this column, Yom Kippur has not even arrived, much less Sukkot, but there is no denying that Sukkot must have seen the sanctuary packed with adults and children, and that our Sukkah must have been decorated to the hilt and enjoyed by all. We now look forward to Simchat Torah, which has to be on your list of must-sees at East End! It's one of my favorites, in no small part due to East End Temple's traditions- we'll roll the Torah scrolls out, supporting it end to end, and Rabbi Adelson will teach us about some of the "mysteries" hidden within. Be sure to look for the Song of the Sea, the special markings that begin each book, the 10 commandments and the Priestly Benediction! We'll sing Hebrew songs with gusto and joy as we march around the sanctuary seven times!

The Jewish Cycle

The holidays come with regularity, changing in date on the American calendar, but always falling at the beginning of our school year, and bringing with it that fall air. As my birthday also falls during this time, I distinctly feel the pull and push of the Jewish cycle... As the air chills, school starts, and we pray to Adonai to return to us and be gracious to us on the High Holidays, the sense of returning and turning does not elude us. Another year has begun!

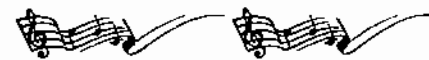
Choir Activity

This year, as you know, I'll be teaching music to the pre-K through 3rd grades in our Hebrew School in addition to my 6th grade cantillation class and B'nei Mitzvah training. But our East End Temple choir is also starting up again! Please call me or speak to me during services if you're interested in joining the choir for any or all of our activities this year! There's singing to be done, and we need your voices to do it!

In closing, I want to say congratulations to Matthew Gottesman and his family on the occasion of his Bar Mitzvah this September, and also, good luck to Lili Blumenberg, Michael Sturm, and Jamie Brenner as well as their families, for their upcoming B'nei Mitzvah this October!

Musically yours,

Hayley



Contact: cantor@eastendtemple.org



EDUCATOR'S CORNER Hagit Halberin

Shanah Tovah (good year) to all,

This is Shanah Chadashah (a new year) at the Religious School as well as in our Jewish life. I want to wish us all a rich and joyful



year in both dimensions; a year of growth, fulfillment and good surprises; a year of positive experiences.

This will be our second year in this new home of East End Temple, and my second year as Education Director. During the summer we managed to complete two goals that we had put ahead of us. One goal was to put together a new Parent Handbook and the second was to hang the three mosaic boards on the fourth floor walls.

The Parents Handbook includes all you need to know about this school year at our Religious School. It includes procedures, special events, curriculum and a year-long calendar to all school related events. Each family in the Religious School will be able to get one copy during the first or second week of school. The distribution of the handbook is part of our effort to improve the communication and connection between parents and the school.

The mosaic boards were done by a group of children who are now in or past Confirmation Class, together with Rabbi Hirsch and with the professional advice of our temple member, Phil Listengart, as well as the help of other members and their children. The mosaic boards were created in the Temple's interim space on First Avenue. Now, about four years later, they are resting at last, proudly, and decorating our walls, for everyone to see. The mosaic describes scenes from the Biblical story of Noah's Ark, and I invite you all to come up and see them on our Third Floor.

Special Events during October:

- 10/6 at 6:00 pm – Simchat Torah & Consecration to Gan & K classes
- 10/24 at 11:00 am – 7th Grade Family Program

And lastly, I wanted to thank all those who expressed their condolences for the passing of my father, who was the main figure in my education and a hero to many in the kibbutz where he lived. Also to veterans of the Iraqi's Zionist Movement in which he served as one of its leaders before and during the early years of the State of Israel.

Hagit

Contact: educator@eastendtemple.org

EERNY NEWS Marc Sobel, Youth Advisor

Happy New Year to everyone! I'm honored and excited to be returning to East End Temple for my second year as both Youth Group Advisor and confirmation class teacher. My first year was a wonderful experience both in terms of my own personal growth and the growth of the youth group. Looking back I am proud of what we accomplished, and looking forward, I am confident and excited about how much more we can do.

First, let me take a moment to introduce this year's youth group board members:

- **Co-Presidents:** Adam Blumenberg and Ben Rutkowski
- **Treasurer:** Dan Hochman
- **VP Membership:** Madison McCullough
- **VP Religious and Holiday Programs:** Kaitlin Ofman
- **VP Social Action Programs:** Dana Harris

We have already begun to schedule our calendar for the year, and will continue over the next couple of months to plan activities. I will list the activities here, and on our new website (www.eastendtemple.org).

Also, I wanted to let everyone know that this year, for the first time, we are going to charge dues for membership in the youth group. This is meant to not only help defray the costs of some of our activities, but also to allow us to participate in events coordinated through NFTY (the URJ's National Federation of Temple Youth). We hope to send membership dues letters out to everyone in the next 3-4 weeks.

On a personal note, my wife Rachel and I have been training for the NYC Marathon, which is on Sunday November 7th. This has been a personal goal of mine since I started running eight years ago, and I am excited at the prospect of finally achieving it. Rather than raise money through an established charity, we ask that anyone who wishes to contribute in our honor please make a contribution to either the Temple's Youth Endowment Fund or the Youth Group directly.

Finally, I want to extend a quick thank you to everyone who has supported me and helped me throughout my first year at the Temple. I look forward to many more.

Marc

Contact: eerny@hotmail.com

HOLD THE DATE!

East End Temple Family Judaica Book Fair

Sunday, December 5th, 2004

IN SISTERHOOD Fern Stampleman

What a great feeling it was to usher in the New Year with friends and family at EET. WRJ was honored to host an Open House on Rosh Hashanah, before we all walked to the river for Tashlich. And what a very sweet beginning it's been!

Please join us now for:

Food For Families, Sunday, 10/3 @ 1pm. This is a very important community service event. Look for details elsewhere in the *Templet*.

Sisterhood Meeting, Tuesday, 10/5 @ 7:30pm.
Contact me @ 212-569-1896 if you'd like to attend and want to know more about what we do.

A program presented by EET member, Linda Hetzer, co-author of MOVING ON: A Practical Guide to Downsizing the Family Home
Sunday, 10/17, 10:30 am -12 Noon.

Whether you've lived in your home for seven years or seventy, when it's time to move on you'll be faced with an increasingly familiar dilemma: what to do with all that stuff. *Moving On* provides invaluable practical information, as well as sanity-saving tips and advice from those who have been through it all and come out smiling.

— Besides tips to get going and checklists to consult, there are strategies to avoid family conflicts, lists of where to donate, sell and recycle items and information on how to preserve and store keepsakes. This book was very helpful to me and my family this summer in the wake of a flood in our apartment. As we went through our "stuff", it became apparent that all of our collectibles didn't occupy our home with equal importance. I believe this program has something for everyone.

For a more extensive review, look up, AARP Bulletin / Your Life / Divvying Up the Old Home Place, or: www.movingonthebook.com

TO RESERVE YOUR SPACE, CALL SHARON 212 - 477- 6444 BY FRIDAY, 10/15. Open to all members of the Temple. \$5.00 for both program and light brunch.

Remember to mark Sunday, 11/21 on your calendars when Rabbi Jen Krause will join us.

Be sure to check other sections of the *Templet* for the latest theatre, library and Judaica Shop activity. Thank you for supporting US...

WRJ: Sister to Sister

Fern

Contact: sfhstamps@aol.com

LIBRARY BUZZ Barbara Ringel & Beth Labush

SAVE THE DATE,
SUNDAY, JANUARY 30,
2005! Mark your calendars!
We know it's early, but we want to be certain you don't miss our second annual Helene Spring Library event! We are thrilled to be able to announce that we have scheduled Tova Mirvis, noted author of the national best seller, *The Ladies Auxiliary*, and the recently published *Outside World*, as our featured speaker. Both her novels have received highly positive reviews, and *The Ladies Auxiliary* was one of our Temple Book Club selections. Ms. Mirvis will read selections from her novels, host a question and answer period, and sign copies of both books, which will be available for sale at a reception in her honor in our social hall. Our hallmark homemade desserts will be featured treats as well! Please mark your calendars now, and be sure to join us from 1-3 pm on January 30th, for what promises to be a wonderful event. Further details will follow in the upcoming months.



Barbara & Beth

Contact: Brinigel@aol.com or BKLNYC@aol.com

JUDAICA SHOP FINDS Fran Kollin

The Entertainment Books are here! What excitement! Entertainment Books provide us with great discounts on restaurants and lots of great New York attractions. They provide the inspiration for us to try new restaurants, spend time at museums, and shop around town for super deals. Priced at only \$20, they make wonderful gifts for the people you love, and your purchase helps the Temple as well. It's your classic win-win situation. Get yours now as supplies are limited. Also, the latest fashion trend is the red Kabbalah ribbon (the bendel) worn on the wrist, to "ward off evil". We have a plentiful supply of these on hand. Tell your friends.

Fran

Contact: thekolins@worldnet.att.net

KEHILA CAMPAIGN UPDATE Sarita Gupta

New Additions to the Kehila Dedication Wall

Bronze plaques have now been installed on our Kehila Dedication Wall in the lobby of the Sanctuary. Donors are: Shirley and Irving Roth, Peter Conrad, Steven A. Sanders, the Altszuler Family, The Naomi Forman Estate, Beth and Gerald Labush, Helen Sanders and Family, Reuben Spencer and Family, Matching Gift Fund.

Contact: iberanbaum@dc37.net or jhs@nyc.rr.com

FOOD FOR FAMILIES Marian C. Fish

The first Food For Families, sponsored by **Florence Peloquin** in memory of her friend, **Dorothy Roberts**, will be on Sunday, Oct. 3 from 1 to 3 pm in the EET Social Hall. Please remember that each person brings 4 loaves of bread and 16 pieces of fruit. Wear a hat or cap!! Gloves are provided.

Join us in feeding the hungry.

Marian C. Fish

Contact: mfish1211@aol.com

THANK YOU VERY MUCH TO OUR SEPTEMBER AND HIGH HOLIDY DAYS USHERS

Martin Barrett and Bette Levy, Rich Bengloff, Jonathan Brenner, Sanya Burger, Paul Connuck and Lauren Weinberger, Peter Conrad, Ron Dubensky, Boris Eshed, Robert Fish, Steven Fishner, Phil Gollance, Norman Greene, Stephen Grosberg, Mark Gurvitz, Mel Harris, Alex Arrow, Mark Jofe, Ben King, Jerry Labush, Paul Levine, Phil Listengart, David Marcus, June Morse, Rick Muskat, Robert Polifka, Paul Ringel, Ed Rubin, Leonard Spring, John Stackhouse, Steven Stampleman, David Sturm and Barbara Katersky, Judith Sussman, Don Tallerman, Eric Weiss, Jedd Wolchok

Who Blew the Shofar?

The Rutkowski family has been an integral part of the life of EET, and Benjamin, our Rosh Hashanah Shofar blower, is no exception. While his mom, Lisa Binder has energetically supported the Temple's growth in membership, Ben, his dad, Joe, and his brother Daniel have graciously filled our sanctuary with glorious music on Shabbat and at special EET concerts.

Ben is 17 years of age, a senior at Bronx Science High School and passionate about music, painting and film making. Ben had an early thirst for playing every instrument he could get his hands on (including violin, accordion, bass, drums and trombone) and currently performs with his trombone in the All City Band and Orchestra at Alice Tully Hall and other venues. After spending last summer at the New York State Summer School of the Arts in Cazenovia NY, he independently joined with a group of like-minded peers to write and create films.

Ben received his calling to blow Shofar from Rabbi Adelson and had no trouble honing that skill. More challenging for Ben was the breathing-in of the noxious, organic odors typical of the ram's horn.

Marcia Muskat



EAST END TEMPLE DONATION FORM

Please use this order form to send contributions to any fund(s) you choose. You may use the form below by filling out the information and sending it with your check to the Temple office, attention to the fund chairperson. Please use separate check for each fund.

Sisterhood Funds	<input type="checkbox"/> COLLATION/ONEG SHABBAT	(\$50)	Elizabeth Gross	(718) 335-8459
	<input type="checkbox"/> FLORAL FUND	(\$54)	June Morse	(212) 689-5557
	<input type="checkbox"/> HELENE SPRING LIBRARY FUND	(\$10 per listing)	Barbara Ringel	477-6625
	<input type="checkbox"/> TORAH FUND	(\$10 per listing)	Carole L. Hyman	477-6444
	<input type="checkbox"/> SIMCHA FUND	(\$10 per listing)	Temple Office	477-6444
	<input type="checkbox"/> FOOD FOR FAMILIES	(\$18 per listing)	Temple Office	477-6444
	<input type="checkbox"/> FOOD FOR FAMILIES DAY SPONSOR	(\$300)	Temple Office	477-6444

The following funds are handled by the Temple Office - 245 East 17th Street NYC (212) 477-6444

<input type="checkbox"/> EET BROTHERHOOD YOUTH ENDOWMENT FUND (EETBYEF)	(\$10 per listing)
<input type="checkbox"/> EL EMET FUND	(\$10 per listing)
<input type="checkbox"/> FUND FOR THE FUTURE	(\$100 per listing)
<input type="checkbox"/> HAMERMESH MUSIC FUND	(\$10 per listing)
<input type="checkbox"/> KEHILA FUND	Joan Beranbaum 212/254-5740 and Judith Sussman 212/982-0382 (\$1800 minimum)
<input type="checkbox"/> MEMORIAL BOARD	(\$720 each)
<input type="checkbox"/> SIMCHA TREE LEAF	(\$236 each)
<input type="checkbox"/> RABBI'S DISCRETIONARY	(\$25 per listing)
<input type="checkbox"/> SARA A. SPENCER CHILDREN'S EDUCATIONAL RESOURCE CENTER	(\$10 per listing)

FROM (name of contributor): _____

MESSAGE: _____

RECIPIENT TO BE NOTIFIED, NAME & ADDRESS: _____

AMOUNT ENCLOSED: \$ _____

THE TEMPLE FAMILY

Congratulations and Best Wishes to

- Beth and Jerry Labush, on their daughters' future marriages: Kyle to Michael Rabkin in May 2005, and Rachel to Abe Pachikara in August 2005
- Ben and Angie Friedman on the birth of their son, Javier Martin Friedman, on Rosh Hashanah, September 16, 2004

Deepest condolences to

Carole Sobin, Jon, Deborah and Andrew Levison, on the passing of Carole's father, Edward Sobin

Welcome New Members

- Jonathan Appell and Stacy Kass and their daughters, Elizabeth and Jamie Appell
- Michael J. Bank
- Barry Ian
- Debra A. Berliner and her children, Adam and Rachel Barda
- Lorenzo Ciniglio and Jennifer Weisbord
- Jessica and George Foltin and their children, Adam and Rebecca
- Ethan Ganot, son of Bonita and Harvey Ganot
- Kevin and Joanne Goodman and their children, Benjamin and Marlena
- Robert M. and Kimberly L. Handelman
- Laurie Hefler, daughter of Gail and Elliott Hefler
- Michael and Rita Kriss and their children, Jacob and Alexandra
- Brian Lifsec and Marcella Rosen and their daughters, Gabriella, Anna and Eva Lifsec
- Sherman Pazner and Susan Zolla-Pasner and their children, Evan and Toby
- Adrienne Rosen
- Dina and Steven Siegel
- Carole and Gerard Silverman
- Gary Steward and Harriet Holtzman
- Scott Whitney and Michelle Leberfeld and their Maxine and Ava Lee Whitney

EET HAS A NEW WEBSITE

Thank you to our Youth Director, Mark Sobel and his assistants, Ellen Ettinger, Marcia Muskat, Edna Rosen and Leonard Spring

Check it out www.eastendtemple.org

Tell us what you think info@eastendtemple.org

IT BELONGS TO US ALL

FAMILY SERVICES AT EET

Family Services are held periodically, first one Friday, October 22 @ 6 pm, as an early evening alternative to East End Temple Shabbat services. The informal and festive nature of the Family Services will lend itself to a shared parent-child worship experience. Children will reinforce and celebrate their religious school learning in this fun, spirited service. The service will be led by Rabbi Adelson and teacher-songleader Chana Rothman on guitar. All are welcome.

We Worship Together As A Congregation

The goal of the EET Ritual Committee is to enhance the worship experience. It strives to create an atmosphere of inclusion and participation. The sweetness of this year's High Holy Days 5765 was a reflection of their inspirational ideas and hard work. They deserve our thanks.

East End Temple Hosted Three New Year Open Houses...

Thanks to the enormous allocation of time, talent and attention to detail demonstrated by Lisa Binder and Frances Lee (co-chairs), Leonard Spring (advertising), Julie Livingston (public relations), and a small army of membership committee members and general EET members.

They have certainly fulfilled the mitzvot of welcoming the stranger and deserve our sincere appreciation.

Marcia Muskat, Ritual Committee chair

EAST END TEMPLE BOOKCLUB

The Book: *The Family Markowitz*
The Author: Allegra Goodman
The Date: October 13th
The Place: call for location 212.477.6444

November book is: *The Coffee Trader* by David Liss

THEATRE TUNES...

"BROOKLYN - THE MUSICAL"
Seats available for November 10th



Call the Temple office 212/477-6444. Don't miss another hit show - get your tickets today!

EET YOUTH ENDOWMENT FUND

Sharon & Shaul Shemesh

To thank our friends who contributed to the East End Temple in honor of our daughter, Saar, on her Bat Mitzvah

CONTRIBUTIONS We are grateful to the following people for their generosity:

EL EMET FUND
YAHZEIT OBSERVANCES

Donor names are given first
Matt Bengloff
Ruth Bengloff
Nancy and Ken Berg
George Forman
Beatrice Heinberg
Seymour Heinberg
Donald W. Mason
Linda B. Mason
Roslyn Schwimmer
Sol Schwimmer

HAMERMESH MUSIC FUND

Sharon and Shaul Shemesh
To thank Rabbi Adelson and Cantor Kobilinsky for their magnificent preparation and support of our daughter, Saar for her Bat Mitzvah
Sara Siegel
Congratulations to Ben Rutkowski for his beautiful and very meaningful blowing of the Shofar

FLORAL FUND

Merle and Jonathan Brenner
In honor of their daughter, Jamie, on her Bat Mitzvah
Jelena and Miki Blumenberg
In honor of their daughter, Lili, on her Bat Mitzvah
Barbara Katersky and David Sturm
In honor of their son, Michael, on his Bar Mitzvah
Shelley and Loren Ross
In loving memory of Florence and William Ross on their yahrzeit

SIMCHA FUND

Shelley and Loren Ross
Mazal Tov to Saar Shemesh on her Bat Mitzvah

FUND FOR THE FUTURE

Joan Beranbaum, John and Ross Stackhouse
Deepest condolences to Carole Sobin and Jon, Deborah & Andrew Levison on the passing of Carole's father

COLLATION/ONEG SHABBAT FUND

Merle and Jonathan Brenner
In honor of their daughter, Jamie, on her Bat Mitzvah
Jelena and Miki Blumenberg
In honor of their daughter, Lili, on her Bat Mitzvah
Barbara Katersky and David Sturm
In honor of their son, Michael, on his Bar Mitzvah

HELENE SPRING LIBRARY FUND

Marion Aaron
In memory of Paul C. Aaron
Rita and Al Cohen
A very speedy recovery to Leo Kuhn
Florence Herz
Congratulations to Beth and Jerry Labush on the engagements of their daughters, Rachel and Kyle
Norma Hirsch

- To Sharon and Shaul Shemesh in celebration of Saar's Bat Mitzvah
- To Sara Siegel on the marriage of her granddaughter
- With thanks to Bette Levy for her devotion to the mature women

Selma Lashine

- In memory of Lesley Sanders, daughter of Helene and Leonard Spring, on the first anniversary of her passing
- For the growth of the library at EET that is named in honor of Helene Spring

Shirley Lipton

- Congratulations to Sharon and Shaul Shemesh in celebration of Saar's Bat Mitzvah
- Best wishes for good health to Mel Schweitzer

Marcia and Michael Muskat
Wishing Mel Schweitzer a healthy and Happy New Year

Betty Phillips

- In memory of my mother, Rose Perlow, on her yahrzeit
- In honor of Saar Shemesh on her Bat Mitzvah
- Best wishes for a speedy and complete recovery for Marjorie Sussman
- Best wishes for a speedy and complete recovery for Mel Schweitzer

Shelley and Loren Ross

- In memory of Naomi Forman
- In loving memory of Lesley Spring Sanders on her yahrzeit

Shirley and Irving Roth
We wish our dear friend, Mel Schweitzer, a quick recovery to good health

Sara Siegel

- Get well wishes to Mel Schweitzer
- Get well wishes to Marjorie Sussman

Helene and Leonard Spring

- Our prayers for Mel Schweitzer's return to good health
- In honor of the 50th anniversary of Peg and Jerry Baker
- For quick healing of Helen Sanders' foot and to wish her a better year ahead
- In loving memory of our darling daughter, Lesley Spring Sanders on her August yahrzeit and October birthday
- Deepest condolences to Carol Sobin on the death of her dear father Edward Sobin
- With love and all best wishes to Marjorie Sussman for a speedy and complete recovery

Judith and Marjorie Sussman
Best wishes for good health to Mel Schweitzer

Lorraine Weiss
Congratulations to the Shemesh family on Saar's Bat Mitzvah

FOOD FOR FAMILIES
SPONSOR-FOR-A DAY

Florence Peloquin
In memory of her dear friend, Dorothy Roberts, October sponsor
Shirley Lipton
In honor of my grandchildren, Joshua and Gabbie Lipton, for November
* * *

Rita Altszuler
In memory of Henry Kussin
The Con Ed Purchasing Department
In memory of Carole Sobin's father, Edward Sobin

TORAH FUND

In memory of Edward Sobin
Helman R. Brook
Neva & Fred Fenig
Friends & colleagues at
Con Edison
Joan & Sanford Freilich
Stephen Ianello
Rosalee & Bruce Lovett
Ronald J. Stein
Ralph M. Wheeler

Florence Herz
Best wishes to Mr & Mrs Herb Perlman on their granddaughter, Claire Nora's Bat Mitzvah

Lorraine Weiss
In memory of the untimely demise of my dearest friends Ruth and Shep Lenchek

Bea Strasnick Breaks Stereotype

When Bea married Joel Lieberman in 1944, synagogue membership was not on their to-do list. After all, while growing up in Prospect Park South, Brooklyn, Bea frequented her neighborhood Temple only for its Sunday evening junior dances. But in 1947, history swerved from its expected course. The Liebermans were prompted to have coffee with Bea's dear friend and sorority sister, Sylvia Shapero, her husband Dr. Ed Shapero and a think tank of young Stuyvesant Town couples devoted to starting a new Reform Jewish Synagogue. Bea, an Arnold Constable assistant buyer, Joel, an attorney, and 15 other luminaries, borrowed strategies from their professional playbooks to create East End Temple's charter. Fifty-seven years later, their roadmap continues to guide EET's passage.

The Activist

Bea's clear-eyed sense of how to generate activity was not lost on the powers-that-be at Arnold Constable (where she became head sportswear buyer), or on The Women's Sportswear Buyer's Club (where she became a two-term president), or on the all-male EET Board of Trustees (where she became the first woman elected to the EET Board). Bea's position as EET's (third) Sisterhood President inspired garment center manufacturers to donate merchandise to the EET Thrift Shop, and Sisterhood members to enroll in Braille transcription classes. Bea distinguished herself as a Jewish Braille Library transcriber. Several of her transcribed books were placed in the Library of Congress, and she was given a personal introduction and photo-op with first lady, and author Eleanor Roosevelt. A hallmark of her fashion/business savvy was EET's Annual Sisterhood Fundraiser: a donor luncheon and fashion show at the Gramercy Park Hotel. Showcased were the "sisterhood girls" as runway models, and Bea as M.C.

One has to admire Bea's 'why-not' approach. In the 1920's, she was a Blue Ridge Mtn. sleep-away camp counselor, and at 19 years of age, she was a graduate of Adelphi College with a major in English and a minor in Psychology. At Adelphi (while working Saturdays at Arnold Constable) her achievements included: editor of the Year Book; member of the Honorary English Society; and star player on the Varsity Basketball and Baseball teams. She was also an accomplished horseback rider who rode across the Pampas in Argentina with a gaucho at her side.



Beatrice Strasnick

More recently, she has studied Psychology and Geology at Hunter College's senior's program and combines Washington D.C. and California Elder Hostel coursework with visits to her two grandchildren and four great-granddaughters. She is a real New Yorker who has resided in the same apartment for 53 years while boldly traveling to more than 30 European countries as well as Hawaii, Bali, Australia, New Zealand and the Fiji Islands.

Current Activities

The fabric of the EET community continues to be shaped by Bea Strasnick. Visitors to the EET Social Hall are greeted by the stained glass windows that Bea commissioned in memory of her late-husband, and former EET vice president, Joel. Bea later married Irv Strasnick who used his architectural carpentry skills to design and construct the Temple's 23rd St. bema, torah ark and exterior windows. EET's silver torah plate is Bea's gift in Irving's memory. In 1958, 1973 and 1998 Bea lovingly scribed three logs of EET's history, making a name for herself as the East End Temple archivist. And in keeping with her knack for breaking new ground, Bea made an April 2004 Shabbat Service even more special by inviting the entire EET community to celebrate her 93rd birthday.

We'd love to hear your story.

Call Marcia Muskat

212.477.6444 and tell her that
you are ready to share.



October 2004

East End Temple

Sunday	Monday	Tuesday	Wednesday	Thursday	Friday	Saturday
3 10:30 AM Chevrat Nashim 1:00 PM Food For Families	4	5 4:00 PM Religious School 6:00 PM Exec Meeting 7:30 PM Sisterhood Meeting	6 4:00 PM Religious School 6:00 PM Simchat Torah & Consecration w/ Gan & K class participation	7 10:00 AM Yizkor Services Office Closed	8 6:00 PM Tot Shabbat 7:30 PM Shabbat Services	9 10:00 AM Bar Mitzvah of Michael Sturm Chol Hamoed Sukkot
10 10:30 AM Chevrat Nashim	11	12 4:00 PM Religious School 7:00 PM Ritual Meeting	13 4:00 PM Religious School 7:30 PM Book Club	14 4:00 PM Religious School 5:30 PM Confirmation Class	15 6:00 PM Shabbat Services 7:30 PM Congregational Dinner	16 10:00 AM Bat Mitzvah of Jamie Brenner
17 10:30 AM Chevrat Nashim 10:30 AM Rosh Chodesh	18 November Temple Closing	19 4:00 PM Religious School 7:00 PM YEC Meeting	20 4:00 PM Religious School 6:30 PM - 8:00 PM Adult Ed/Fall Classes	21 4:00 PM Religious School 5:30 PM 7th class/dinner	22 6:00 PM Family Services 7:30 PM Shabbat Services	23 10:00 AM Shabbat Chawrah: Torah Study
24 10:30 AM Chevrat Nashim 11:00 AM 7th gd Program w/parents	25	26 4:00 PM Religious School 7:00 PM Membership mtg	27 4:00 PM Religious School 6:30 PM - 8:00 PM Adult Ed/Fall Classes	28 4:00 PM Religious School 5:30 PM Confirmation Class	29 6:00 PM Shabbat Services	30
31 10:30 AM Chevrat Nashim <i>Daylight Saving Time Ends</i>						

CHARLES S. SALOMON

RIVERSIDE MEMORIAL CHAPEL*

180 West 76 Street New York, NY 10023 212.362.6600

Our Service Is Available in the Temple, Home, or our Chapel

*is a subsidiary of Service Corporation International

1929 Allen Parkway, Houston, TX 7709 (713) 522-5141