

NOVEMBER 2004
CHESHVAN 5765

SHABBAT SERVICES

Friday 5 @ 6 pm

1st grade class participation

Saturday 6 @ 10 am

Shabbat Chavurah: Torah Study

Friday 12 @ 7:30 pm

*New Member's Shabbat, with
presentation of additional
Bronze Plaques and Honor Roll*

Tot Shabbat, 6 pm

Friday 19 @ 6 pm

Saturday 20 @ 10 am

Shabbat Chavurah: Torah Study

Friday 26 @ 7:30 pm

TEMPLE ACTIVITIES

Adult Ed – Kabbalah Program

Wednesdays 3, 10 & 17 @ 6:30 pm

Chevrat Nashim –

Sundays 7, 14, 21, & 28 @ 10:30 am

Food For Families

Sunday 7 @ 1 pm

Book Club: The Coffee Trader

Tuesday 16 @ 7:30 pm

Congregational Dinner

Friday 19 @ 7:30 pm

Family Ed Havdalah Program

Saturday 20 @ 2:30 pm

**Sisterhood Program: "OUT OF
TIME: Making the hours count
instead of counting the hours"**

w/Rabbi Jen Krause

Sunday 21 @ 10:30 am

Open School Afternoon and

Book Fair Night

Tuesday 30

Open School 4-6 pm

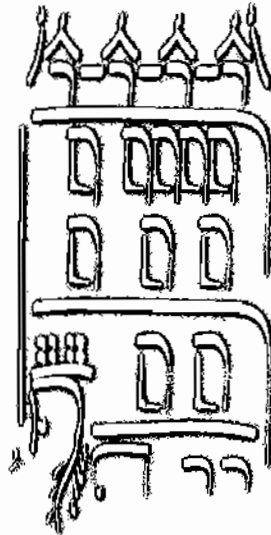
Book Fair 7-9 pm

**NEW MEMBER'S SHABBAT & ONEG WITH
PRESENTATION OF ADDITIONAL KEHILA BRONZE
PLAQUES AND HONOR ROLL**

Friday 12 @ 7:30 pm

CONGREGATIONAL DINNER

Friday 19 @ 7:30 pm



Templet

DO TORAH FOR TEN

Editor's note: There has been such strong response to this program that we are repeating the "Ten Minutes of Torah" information.

Only ten minutes a day are necessary to bring your personal connection to a Jewish text, issue or topic. Under the auspices of the Union for Reform Judaism, each weekday morning a one-page e-mail will be delivered to your inbox to study at your convenience during the day.

Reform Jews committed to having Judaism inform their daily lives will receive a different topic of Jewish interest each day. E.g., Monday: Torah; Tuesday: Social action; Wednesday: Israel Connections; Thursday: Jewish Ethics; Friday: Jewish World. You may select all five or any combination of topics.

The process is simple; the results enriching. For more information on "Ten Minutes of Torah" visit their site: www.urj.org/torah/ten

EAST END TEMPLE

Congregation El Emet

245 East 17th Street

New York, NY 10003

ph: 212-477-6444

fax: 212-477-6619

www.eastendtemple.org

info@eastendtemple.org

Rabbi David Adelson

Cantor Hayley Kobilinsky

Karen Feuer, President



Florence Peloquin

SEE BACK CALENDAR FOR ALL CLOSING

Dear Friends,

I have only a few paragraphs here to convince you of your need to come on the East End Temple trip to Israel this March 28- April 5, 2005. In one of my sermons on Rosh Hashanah, I recognized that we cannot take for granted that every Jew in the United States feels connected to Israel. I then offered some reasons why we all might, or should, care about Israel. I finally suggested that the very best way to begin or further develop a relationship with Israel is to visit Israel



Israel has been a spiritual focus of the Jewish people for as long as we have been a people. In every age, we have recited prayers and written poetry about our yearning for the land of Israel. But in the year 2004, so many of us think of Israel only as a land embroiled in conflict. Israelis are seen as victims of suicide bombings and even as oppressors of the Palestinian people. However, amidst the turmoil, a bold experiment is living right now in the modern state of Israel. What grows there culturally, religiously and socially will be a large part of what being a Jew means in the future for all of us. By caring about Israel and Israelis, we can achieve many levels of connection to our own Jewish identity and deepen our own sense of having a spiritual address in the universe, even from here in America.

Israel: Up Close and Personal

There is just something about going to visit Israel that is life-changing. We put a human face on who Israelis are and learn about their daily challenges and joys when we are there. We understand close up the multiple perspectives of both Israelis and Palestinians in struggling to live with and ultimately resolve the ongoing conflict. We smell the smells, eat the food, see the biblical and the modern vistas, and hear the curses and the blessings that Jews are capable of bestowing on one another.

Our trip will be a combination of education, fun, relaxation and stimulation. It will be a chance for a group of us from EET to get to know each other better

and hopefully, to grow individually in our Jewish spiritual lives. We will see cities and towns, visit museums and spend time in nature; learn about the history of the land and the history of the modern state; learn first hand about the current conflict; meet Israelis of different types and experiences about what it means to them to be an Israeli and to be a Jew in the Jewish state. We will visit stops on many tourists' itineraries, such as a kibbutz in the North, the Golan Heights, Masada, and spend lots of time in Jerusalem including a Shabbat there. I will also take you to see people and places I love – dear friends who can describe different perspectives on life in Israel, and to corners of Jerusalem that I think are spectacularly evocative and beautiful, and where one can eat very well. I also look forward to growing closer as a group by sharing an important time together. Hopefully, Lynn will be joining us as well, and it will be a chance for us all to get to know each other better.

Good Weather + Good Value

The timing of the trip allows the best combination all year of the nicest weather and the lowest price. But I know that it is still not cheap, and it is never easy to get away from one's regular schedule. Also, I know that many of us have deep reservations about visiting a place that is so often associated with violence and anxiety. I can encourage you by offering my own experience of every time I am there. When you are there, life simply goes on all around. Also, the act of going despite one's reservations can be a source of deep pride. My Israeli friends regularly tell me how meaningful it is to them that I come despite the negative hype and general anxiety.

We will have an informational meeting about the trip at 7:30 pm on Tuesday, November 16th. If you are even thinking of going, please get in touch with me. We will need to commit to our number of participants by mid-December. Please also see the one-page flyer about the trip within this Temple.

I can't wait to go. Please join me.

L'shalom,

Torah Portions for Cheshvan

11/6:	Chaye Sara	Gen. 23:1-25:18
11/13:	Toledot	Gen. 25:19-28:9
11/20:	Vayetze	Gen. 28:10-31:3
11/27:	Vayishlach	Gen. 32:4-36:43

East End Temple
TEMPLE
 245 East 17th Street
 New York, NY 10003

Editor **Florence Peloquin**
 Production **Sharon Shemesh**



Shalom to all,

November correlates with the Hebrew month of Cheshvan, which is holiday-free and therefore is an excellent time to get into a productive routine after all the holidays of the month of Tishri.



In this year's Simchat Torah service, we were happy to consecrate fifteen new students to our younger division (Pre K – 3rd grades). This event was one of the most joyful I have experienced here, as we had a full music band to accompany the dance with the Torah in the Social Hall. This school year we also accepted four new and promising teachers to our faculty, to replace teachers who moved on to different places and jobs.

New Parents' Handbook

During October all of you should have received our new (light blue) Parents' Handbook. The books were sent home with the children, and contain all the information for this school year. Please go over the book to be better informed and copy the events calendar on its last page onto your own calendar. We hope that the book will eliminate misunderstanding and help you get involved. During October, I also emailed parents introduction letters from their children's teachers.

On Friday, November 5th we will have the first **Shabbat Service & Dinner with 1st Graders and their families**. On Saturday, November 20th we will have the first of our **Family Programs**, in which we will celebrate the ceremony of **Havdalah**, the separation from the Shabbat. Sign-up forms will be sent to parents. All families from 1st to 6th grades are asked to sign up to at least one of the three Family Program workshops that we offer. Details of all Family Programs are in the Parents' Handbook.

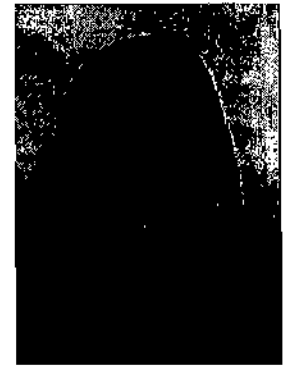
Even without Jewish holidays, November's calendar is full and requires attention:

- Tuesday, November 2nd - **Election Day – No Religious School**
- Thursday, November 11th – **Veterans' Day – We do have Religious School** (unlike Public Schools which will be closed)
- Wednesday & Thursday, Nov. 24th & 25th – **Thanksgiving Vacation – no Religious School**

Hagit

Contact: educator@eastendtemple.org

Our new East End Temple choir has become my mission over the past few months. Our first performance together was a huge success, and though I can't speak for everyone, I surely got a lot out of the experience! Our first meeting of the "New Year" will take place on Wednesday, November 10th. The following dates are: Wed., Nov. 17th, Tues., Nov. 23rd, Mon., Nov. 29th. I want to welcome all who love to sing and extend an invitation to the entire East End Temple community to share in some very special singing. This time, we will focus on Chanukah music, and we will sing at services during Chanukah on December 10th.



In addition, we have **very big news!** For the first time, East End Temple will be represented at the **Fifth Annual Festival of Choirs**, held at Congregation Rodeph Shalom, on Sunday, December 12th, 2004 at 3pm. Many of New York's synagogue choirs are already represented at these festivals, and this year we will be too. This should give you all the more reason to join our ranks.

Let me emphasize that even if you can only commit to this one rehearsal and performance period and are not sure if you can continue to sing with us, or if you cannot make some of the rehearsals I've listed above, we'll make it work. I'll be more than glad to make you your own CD to practice at home. **You don't even need to read music OR read, speak, or understand any Hebrew!** I know that some of you will be participating in the Kabbalah classes and various committee meetings, which is why I've spread out the rehearsals on different weeknights. Let's make music together.

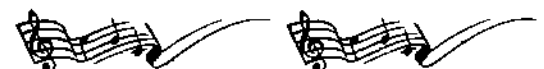
On another note (pun intended), I have several interesting performances this month, and you are all invited. Please see the box on another page for more information.

I would like to extend my congratulations to our October B'nei Mitzvah and their families: Lili Blumenberg, Michael Sturm, and Jamie Brenner, and all of your families, Mazal Tov!

Musically Yours,

Hayley Kobilinsky

Contact: cantor@eastendtemple.org



LIBRARY BUZZ - Barbara Ringel & Beth Labovitz

January 30th is getting closer, and we hope you have already carefully reserved that date on your 2005 calendars! Our second annual Helene Spring Library event promises to be a memorable one. For those who wish to read Tova Mirvis's two novels, *The Ladies Auxiliary* and *The Outside World*, before our event, you can check out both books in our library. In addition, copies will be available for sale at our December book fair. Of course you will also be able to purchase both books at our library event on January 30th, at which time Tova Mirvis will personally sign your copies.



Todah Rabah to Volunteers

Now that our library is up and running so efficiently, we would like to thank those volunteers, whose consistent efforts made this possible. Our chief volunteer, June Morse, together with her loyal band that includes Helen Doneger, Betty Phillips, Shirley Lipton, and Sara Siegel, have assisted our professional librarian, Marsha Labovitz, in making our library the jewel that it is. We are grateful for your tireless effort and hope you, our congregants, will take advantage of all the resources our library offers.

Barbara & Beth

Contact: Bringel@aol.com or BKLNYC@aol.com



JUDAICA SHOP FINDS - Fran Kolin

Did everyone see the man at the Yankee game wearing the Yankee kippah? You can get one, too. The Judaica Shop carries hand-painted suede kippot of all our great New York teams! But did you know that you can "special-order" ANY team kippah? It takes a while, since each one is painted to order, so now might be a good time to think about your favorite out-of-town teams, and out-of-town relatives! Also, we've got all sorts of kid-friendly designs, and can probably get your kid's favorites as well. Spiderman, SpongeBob SquarePants, Bob the Builder, Scooby-Doo... all the big ones. Call, or come by our Judaica Shop and take a look.

Fran

Contact: thekolins@worldnet.att.net

SISTER TO SISTER - Fern Stampleman

Many thanks go to EET member and author Linda Hetzer for sharing her knowledge and experience with us on October 17th that she wrote about in *Moving On: A Practical Guide to Downsizing the Family Home*. Whether you're closing up the family home, moving, or just need to get rid of stuff, Linda says, "It's never too early to get started." A great time was had by all, and if you weren't able to join us, you can still purchase Linda's book from Sharon Shemesh in the Temple office. For more information visit www.movingonthebook.com

DON'T MISS OUT ON THE OPPORTUNITY TO BE PART OF THE NEXT SISTERHOOD PROGRAM, "OUT OF TIME: MAKING THE HOURS COUNT INSTEAD OF COUNTING THE HOURS", Sunday, November 21st, from 10:30 am - 12 NOON.

Our lives are dominated by hour hands, calendars, and all sorts of daily planners. We're constantly playing beat-the-clock, trying to work magic with a finite amount of time, all the while wondering why it moves so fast. How do we learn to set our lives by a different sort of clock, one that values meaning and quality over volume and velocity? What wisdom can we pull from the toolbox of Jewish tradition to help us count our days in value and purpose, not only in hours and minutes? Join us as we engage in these and other important questions about creating meaning in our lives when Rabbi Jen Krause talks about this timely topic.

Rabbi Krause is a dedicated teacher and writer, whose articles appear in numerous Jewish and other religious publications throughout the United States, Israel, and Europe. She has also been featured in mainstream news magazines, such as Newsweek and US News and World Report.

To reserve space, call Sharon in the Temple office @212-477-6444 by Friday 11/19. Admission to the program is \$5.00 for members, \$8.00 for non-members and includes a light brunch. We look forward to seeing you on November 21st!

Finally, want to do something different? Learn how to make your own sufganiot, (that's jelly doughnuts!) traditional Chanukah fare, at the next Sisterhood meeting, Tuesday, 12/14 beginning at 7:30 pm., last candle.

As always, look for information about Food For Families, the Helene Spring Library, theater parties and the latest Judaica Shop finds elsewhere in the Temple.

Thank you for supporting US, In Sisterhood...

Fern

Contact: sfhstamps@aol.com

BOOK FAIR UPDATE: Save the Date

Be sure to join us on **Sunday, December 5**, from 1-5 pm as we celebrate all things literary at East End Temple's Fifth Annual Family Judaica Book Fair. We've moved our spring event earlier this year to allow plenty of time for Chanukah shopping. Stock up on gifts for your loved ones (as well as yourself!). We promise a terrific selection of books of interest to Jewish readers of all ages - recently released nonfiction and novels, books on Jewish history, spirituality and ritual, and, of course, a great selection of cookbooks and Haggadahs. Rabbi Adelson has also made a list of his recommendations, and, as always, the selection of children's literature will be extensive. Whether you're the parent of a toddler eager for his or her first Sammy the Spider book, or a teenager ready for Art Spiegelman's *Maus*, there's something for everyone.

A portion of the proceeds from Book Fair sales goes to our Temple. Families can also purchase books to donate to the Helene Spring Library. Please help make this a successful fundraiser by inviting your friends and neighbors to visit. Your support will make this a fun and profitable event. And for those of you with young children, enjoy the Chanukah celebration that will take place the same afternoon. More about that in the next Templet.



Lauren Weinberger

TEMPLE THINK TANK

Brainstorming EET's Future Programs

Thursday, November 11, 7 - 9 pm

(Brain food will be provided)

We want to tap into *your* creative energies... to make sure that the needs and interests of the congregation are met... through new and creative ideas for Temple projects, events, study sessions... in any area of *your* interest: music, learning, family, worship, community. Share your ideas!

Past brainstorming sessions helped create the vision for the new Temple building!

If you have questions, please contact
Edna Rosen, VP - Programming
212-477-6444 - info@eastendtemple.org

THEATRE TUNES... for 2005

"All Shook Up" March 9th

"Dirty Rotten Scoundrels" April 13th



Call the Temple office 212/477-6444 to reserve today

In Memoriam

**Leo Kuhn
1918 - 2004**

The East End Temple family lost one of its most dedicated and longtime members, Leo Kuhn, who passed away on October 16. Leo was an officer of East End Temple and served on the Board of Trustees for many years. He was also active in the Men's Club. A specialist in real estate matters, Leo managed East End Temple's buildings over the years, making them productive and profitable.

A native of the Brownsville section of Brooklyn, he graduated from Brooklyn College, then received further training for the Air Force at Yale University in radio electronics and served in WWII. His early career found him working for various theater companies, but his proudest and favorite affiliation was in more recent years working for the management company that operated the United Nations Plaza property where he was Senior Vice President of Leasing. He taught real estate at Pratt Institute and was known by his friends as a dedicated fisherman and equally dedicated poker player.

Leo Kuhn was married to the late Lenore "Sunnie" Kuhn for 58 years. Both their sons, James and Robert, were b'nei mitzvah and confirmed at East End Temple. Our entire Temple congregation extends condolences to the Kuhn family.

Florence Peloquin

Hayley's Concerts

I would like to invite you all to several performances I'll be giving later this month. On November 7th, at 2 pm, I'll be singing at the Eldridge Street Synagogue in a lecture-concert entitled, "Women of the Gallery," focusing on klezmer and cantorial music. The concert will be preceded by a lecture regarding the history of the "women's section" in America. (Unfortunately, due to the restraints placed upon us by the Orthodox congregation which is housed there, only women will be permitted to attend the concert portion of that day.) Also, on Saturday, November 20th, at 7 pm, and on Sunday, November 28th, at 4pm, I will make my debut as Micaela in Bizet's *Carmen* at the Regina Opera Co. of Brooklyn. Please speak to me if you would like me to reserve seats for you, or you can obtain ticket information, as well as directions and other information on their website, www.reginaopera.org.



FOOD FOR FAMILIES

Marian C. Fish

At our first Food For Families, a hard-working group of members produced over 250 meals for the hungry. This means that more than 500 sandwiches were packed, one each of cheese and peanut butter-and-jelly, and sent off with fruit, drinks, and cookies in the City Harvest truck. How proud we were, as we loaded the truck, knowing that others in the city would have a nourishing meal that day. Thanks to Rabbi David Adelson, Cynthia, Tracey, and Ron Dubensky, Marian and Robert Fish, Jamie Appell, Stacy Kass, Elizabeth Kass Appell, Florence Peloquin, Mohammed Hoque, and Celia and Ben Vimont for helping us. We especially want to thank Florence Peloquin, once again, for sponsoring the October Food For Families.



Loading our meals onto City Harvest truck

The second Food For Families is on Sunday, November 7th from 1 to 2:30 pm. Please bring four loaves of bread, 16 pieces of fruit, lots of energy, and a cap or hat to wear (Health Department regulations). We supply the rest!! We are grateful to Shirley Lipton for her sponsorship of the November Food For Families. PLEASE REMEMBER: Hungry people are hungry in all types of weather. It is a mitzvah to feed the hungry on a sunny or rainy day.

Please join us.

Marian

Contact: mfish1211@aol.com

Kehila Honors Continue ~

Join us at Shabbat Services on November 12 when we present the new Kehila Honor Roll that has been installed in our Sanctuary lobby. The names of the donors will be read as well as the names of the new donors of bronze plaques.

That evening we will be welcoming new members of the Temple, and it is appropriate that we honor our present, committed members as well as the new ones. A festive Oneg Shabbat will follow services.

Contact: jberanbaum@dc37.net or jhs@nyc.rr.com



EAST END TEMPLE DONATION FORM

Please use this order form to send contributions to any fund(s) you choose. You may use the form below by filling out the information and sending it with your check to the Temple office, attention to the fund chairperson. Please use separate check for each fund.

- | | | | | |
|---------------------|---|--------------------|------------------------|-----------------------|
| Sisterhood
Funds | <input type="checkbox"/> COLLATION/ONEG SHABBAT | (\$50) | Elizabeth Gross | (718) 335-8459 |
| | <input type="checkbox"/> FLORAL FUND | (\$54) | June Morse | (212) 689-5557 |
| | <input type="checkbox"/> HELENE SPRING LIBRARY FUND | (\$10 per listing) | Barbara Ringel | 477-6625 |
| | <input type="checkbox"/> TORAH FUND | (\$10 per listing) | Carole L. Hyman | 477-6444 |
| | <input type="checkbox"/> SIMCHA FUND | (\$10 per listing) | Temple Office | 477-6444 |
| | <input type="checkbox"/> FOOD FOR FAMILIES | (\$18 per listing) | Temple Office | 477-6444 |
| | <input type="checkbox"/> FOOD FOR FAMILIES DAY SPONSOR | (\$300) | Temple Office | 477-6444 |

The following funds are handled by the Temple Office – 245 East 17th Street NYC (212) 477-6444

- | | |
|--|--|
| <input type="checkbox"/> EET BROTHERHOOD YOUTH ENDOWMENT FUND (EETBYEF) | (\$10 per listing) |
| <input type="checkbox"/> EL EMET FUND | (\$10 per listing) |
| <input type="checkbox"/> FUND FOR THE FUTURE | (\$100 per listing) |
| <input type="checkbox"/> HAMERMESH MUSIC FUND | (\$10 per listing) |
| <input type="checkbox"/> KEHILA FUND | Joan Beranbaum 212/254-5740 and Judith Sussman 212/982-0382 (\$1800 minimum) |
| <input type="checkbox"/> MEMORIAL BOARD | (\$720 each) |
| <input type="checkbox"/> SIMCHA TREE | (\$236 each) |
| <input type="checkbox"/> RABBI'S DISCRETIONARY | (\$25 per listing) |
| <input type="checkbox"/> SARA A. SPENCER CHILDREN'S EDUCATIONAL RESOURCE CENTER | (\$10 per listing) |

FROM (name of contributor): _____

MESSAGE: _____

RECIPIENT TO BE NOTIFIED, NAME & ADDRESS: _____

AMOUNT ENCLOSED: \$ _____

According to the Gordon Family: The Community Rules

The community surrounding Julie Livingston, Peter Gordon and sons, Jacob and Ben, enable them to keep in close proximity to one another, to take full advantage of city living conveniences and to strengthen their family and neighborhood ties. Through their volunteer work, they welcome new connections as well as the joy of creating an extended family within their community. Peter is active with the Baruch College Alumni Association and coaches his sons' soccer and baseball teams. Peter and Julie both support P.S. 116 and its nationally recognized chess team.

Community Beginnings

It's no wonder that the Gordon family walks hand-in-hand with their community. Julie and Peter met twenty-one years ago when Peter was living on East 25th Street and Julie lived on East 26th. They fell in love, married and moved "uptown" to East 27th Street, where they currently reside. Peter's marketing communications company, inc3, is on East 23rd Street and Julie, as Director of Marketing Communications for the Toy Industry Association is on 25th Street and Broadway. Seven year-old Ben attends local P.S. 116 on East 33rd Street and Jacob, eleven years old, is now going to the NYC Lab School for Collaborative Studies on West 17th Street.

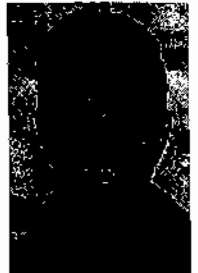
In their early years, Julie and Peter experienced what it means to "give back". Julie's mom helped build a fledgling Reform synagogue in their Howard Beach, Queens neighborhood. Peter's growing up years in Mill Basin, Brooklyn were greatly influenced by his grandparent's experiences helping relatives who survived the Holocaust.



Jacob, Julie Benjamin and Peter Gordon

Temple Activity

When Peter, Julie, Jacob and Ben want to take a walk on the reward side of the "give and get" equation of life, they immerse themselves in the intimacy and warmth of East End Temple. Julie, now on the EET Board of Trustees, is active in spreading the word about EET through public relations. Peter's company designed and maintained EET's first website and helped create the 2004 East End Temple High Holy Day CD. Together, they attend congregational dinners and weekend retreats and continue to enrich their bonds to family, friends and clergy in "... a community where everybody knows your name".



We'd love to hear your story.
Call Marcia Muskat
212.477.6444 and tell her that
you are ready to share.

CONTRIBUTIONS We are grateful to the following people for their generosity:

RABBI'S DISCRETIONARY FUND

Carole Sobin, Jon Levison & the entire Family

To thank the rabbi for all of his support before, during and after Carole's father funeral

Laurianne Marrell & James Chin

To thank Rabbi Adelson for officiating at our wedding



EET YOUTH ENDOWMENT FUND

Wishing Marc and Rachel Sobel a safe and successful NYC Marathon

The Fish Family

Marcia & Michael Muskat

Nancy & Larry Schneider

- Congratulations to Sharon & Shaul Shemesh on the Bat Mitzvah of Saar
- Congratulations to Beth & Jerry Labush on the engagement of their daughters Kyle and Rachel

THE TEMPLE FAMILY

Congratulations and Mazal Tov to

- Fang and Marc Block on their marriage
- Karen Friedman and Peter Seligman on their marriage
- Kate Kang and David Lebowitz on their marriage
- Laurieanne Marrell and James Chin on their marriage
- June Paek and Justin Farahan on June's conversion to Judaism. Welcome.
- Rachel and Paul Shapiro on the birth of their daughter, Lila Sharon, 5bl. 2oz on October 14th
- Dinha and Steven Siegel on their marriage
- Sara Siegel on the birth of her great-granddaughter, Tamar

Welcome New Members

- Heather and Andrew Bard
- Daniel Cherubin

Get Well Wishes to

Alice Abrash, Elyssa Brent, James Chin, Helen Doneger, Michael Ginsburg, Anne Peskin, Clara Richter, Irving Roth, Mel Schweitzer, Marjorie Sussman, Lorraine Weiss

Deepest condolences to

Selma Lashine on the untimely passing of her son, William D. Lashine

EAST END TEMPLE BOOKCLUB

The Book: *The Coffee Trader*
The Author: David Liss
The Date: November 16th
The Place: call for location 212.477.6444

NEW MEMBERS' SHABBAT

Rabbi David Adelson
Karen Feuer, President
Marcia Muskat, Membership Chair

cordially invite you to attend the
Annual New Member's Shabbat
November 12, 2004 7:30 pm Service

Followed by a festive Oneg Shabbat

ATTENTION MEMBERS: PLEASE JOIN US TO HONOR AND WELCOME OUR NEW MEMBERS

THANK YOU TO OUR OCTOBER USHERS

Michael Bank, Martin Barrett, Rich Bengloff,
Sanya Burger, Mel Harris, Marcy Einhorn,
Susan Epstein, Karen Feuer, Beth Hermelin,
Fred Kolikoff, Marcia Muskat, Paul and Ursula Ofman,
Bob Polifka, Paul Ringel, Sharon Shemesh,
Kurt Seidman and Liz Willard, Leonard Spring,
Fern Stampleman, David Sturm and Barbara Katersky

THANK YOU TO OUR OCTOBER BIMAH GUESTS

Suellen Eshed, Bette Levy, Marcia Muskat,
Pearl Polifka, Barbara Ringel, Edna Rosen,
Helene Spring, Lauren Weinberger

EET CONGREGATIONAL DINNER *Italian Style* **FRIDAY, NOVEMBER 19, 7:30 PM**

Join the East End Temple community for the entire evening beginning with Shabbat Services @ 6 pm

MAKE YOUR DINNER RESERVATIONS BY NOVEMBER 12th!



East End Temple, 245 East 17th Street, New York, NY 10003

Congregational Dinner November 19, 7:30 pm

Member Adults & Teens @ \$18 _____ Member's Children 6-13 @ \$9 _____

Non-Member Adults @ \$25 _____ Non-Member Children 6-13 @ \$12 _____

Children under 6 (No Charge) _____

Enclosed is \$ _____ in payment for the dinner

NAME _____

PHONE _____

East End Temple Israel Trip

March 28-April 5, 2005

From Rabbi David Adelson

Join me for a life-changing, illuminating and emotional pilgrimage to Israel. I have been blessed to fall in love with Israel and I cannot wait to lead a group from EET and share my passion for the Jewish state. More details on November 16 @ 7:30pm.

Our trip is still being formed, and those who participate will help decide on our final itinerary. An initial proposed itinerary from ARZA World Travel plus my own input, include:

- * one night in Tel Aviv, two nights at a kibbutz guest house in the North, and four in Jerusalem
- * touring the city of Tel Aviv
- * visiting the mystical city of Sfat (Tzfat)
- * hiking in the Golan Heights and the nature reserve of Tel Dan
- * visiting the Old City and the Western Wall
- * a conversation with David Ehrlich, journalist, writer, soldier and owner of Tmol Shilshom Café, where I worked as a barman
- * meetings with leaders of the Reform movement in Israel
- * meeting with rabbis from Rabbis for Human Rights, for an up-close perspective on the state of Israeli-Palestinian relations
- * meeting with my friend Dina Kraft, a journalist who has made aliya to Israel
- * touring Yad VaShem, Israel's holocaust memorial
- * ascending Masada, and visiting nearby Ein Gedi, a natural springs in the desert
- * Shabbat in Jerusalem, including attending services at a wonderful Reform Synagogue, Kol HaNeshama
- * Free time in Jerusalem, with me as a guide



This is only a proposed list, and together we will finalize what we will do.

The proposed price is \$2200 per person, which includes the following:

- Flights: New York-Tel Aviv/Tel Aviv-New York as listed in the "air routing" paragraph of this proposal (to come)
- 7 nights accommodation in "moderate deluxe" and "first class" hotels
- Arrival & departure transfers
- 12 meals: 7 Israeli buffet breakfasts and 5 dinners as listed in program
- Private motor coach featuring large panoramic windows, reclining seats and foot rests
- Friendly and professional tour director/licensed English speaking guide
- An educational coordinator who will ensure that you will have "A fabulous Israel Experience"
- All program and entrance fees
- Restaurant tipping in hotels included
- All hotel and airport portorage and tipping included
- Each participant will receive a guide book titled "The Spiritual Guide to Israel" by Rabbi Lawrence A. Hoffman
- ARZA World Travel folding bags, luggage straps and name tag

For more information, contact me at adelson@eastendtemple.org or 212-477-6444. Join us for an informational meeting on Nov. 16 at 7:30. See you then!



WE ARE GRATEFUL... to the following people for their contributions to the Congregation KOL NIDRE APPEAL

Saul & Betty Adelson
Rita Altszuler
Arthur Bank
Michael Bank
Andrew & Heather Bard
Martin J. Barrett & Bette S. Levy
Doris Becker
Richard Bengloff
Betty Beranbaum
Charles & Mary Bleiberg
Kathryn Bleiberg
Jonathan & Merle Brenner
Harold & Elaine Cantor
Lorenzo Ciniglio &
Jennifer Weisbord
Paul Connuck & Lauren Weinberger
Peter Conrad
Alan & Myra Doneger
Helen Doneger
Ronald & Cynthia Dubensky
Marcy Einhorn
Susan Epstein
Boris & Suellen Eshed
Henry & Ellen Ettinger
Karen Feuer
Samuel Finkelstein
Robert & Marian Fish
Steven & Reva Fishner
Beatrice Fox
Richard & Barbara Frankel
Ethan Ganot
Dorothy Geller
Ellis & Mildred Greene
Norman & Loren Greene
Stephen & Amelia Grosberg
Elizabeth Gross
Mel Harris & Ruth Haber
Evelyn Hendline
Florence Herz
David Hochman & Eugenia Siegler
Robert Hodes & Barbara Thal Hodes
Babette Hollister
Carole L. Hyman
Joyce Hyman
Philip & Helen Hyman
Hilde Jaffe
Ruth Jaffe
Mary Kay Jezzini
Amy Keyishians
Marjorie Keyishians
Barry & Barbara Kimmel
Laurence & Estelle Kobilinsky
Fred Kolikoff
Robert & Francine Kolin
Jack & Fran Krull
Leo Kuhn
Gerald & Beth Labush

Daniel Lavin & Judith Jacobson
Frances Lee
Martha Levin
Paul & Helen Levine
Jon Levison & Carole Sobin
Shirley Lipton
Philip & Janie Listengart
Doris Litt
Judith Lorber
Elissa Macklin
Beatrice Marcus
David & Babs Marcus
Alex Mekinulov
Peter & Roni Messer
June Morse
Elaine Muskat
Michael & Marcia Muskat
Richard & Wendy Muskat
Marilyn Nevler-Matzura
Carol Nimberger
Paul & Ursula Ofman
Ian & Lola Pearl
Florence Peloquin
Samuel & Anne Peskin
Betty Phillips
Gary Podorowsky
Robert & Pearl Polifka
Adele Reis
Yoav & Ann Marie Resnick
Paul & Barbara Ringel
Ruth Rose
Samuel & Edna Rosen
Samuel Rosenfeld
Irving & Shirley Roth
Steven & Lara Rudd
Joseph Rutkowski & Lisa Binder
Miguel & Noemi Diaz-Salazar
Malcolm & Elaine Sampliner
Helen Sanders
Hon. Steven Sanders
Steven A. Sanders
Alice Schlesinger-Nooter
Claire Schneider
Michael & Diane Schoeman
Michael Schwimmer
Roslyn Schwimmer
Diana Shapiro
Paul & Rachel Shapiro
Nathan & Krystyna Siegel
Sara Siegel
Marilyn Sobelman
Thelma Spinrad
Leonard & Helene Spring
John Stackhouse & Joan Beranbaum
Hannah Stampleman
Steven & Fern Stampleman
Beatrice Strasnick

Donald & Konki Sussman
Judith Sussman
Jeffrey Thomases
Lorraine Weiss
Charlotte Wilson
Stephen Wilson
Jedd Wolchok & Karen Popkin
Scott & Cheryl Workman

* **If you have contributed and your name has not been listed, forgive us. We will include it next month.**

* **If you have not yet contributed, it is not too late to do so.**



CONTRIBUTIONS We are grateful to the following people for their generosity

FLORAL FUND

Shirley Lipton

In memory of her husband,
Murray, on his yahrzeit

Steven A. Sanders

Helene & Leonard Spring

In memory of Lesley Sanders

SIMCHA FUND

Marcia & Michael Muskat

Congrats -- Beth and Jerry Labush
on Rachel and Kyle's engagements

HAMERMESH MUSIC FUND

Marge & Judith Sussman

To thank Pearl and Bob
Polifka, Hayley Kobilinsky,
Rabbi Adelson and Peter
Gordon for the HHD CD

**SARA A. SPENCER CHILDREN'S
EDUCATIONAL RESOURCE
CENTER FUND**

Phil Gollance

In memory of my father, Morton
Gollance, on his yahrzeit

CONTRIBUTIONS We are grateful to the following people for their generosity.

ELEMENT FUND

YAHRZEIT OBSERVANCES

Donor names are given first

Michael Arsham

Susan Klein

Linda & David Brawerman

Joseph V. Marcus

Esther Diamond

Ethel Barnett

Lee Anne, Mark and Jeremy Gurvitz

Jeanette Gurvitz

Beverly Haynes

Robert Haynes

Cheryl & Jerrold Hirsch

Sidney Hirsch

Fred Kolikoff

Sarah Kolikoff

Fran & Bobby

Irving Marder

Judith Lorber

Sophie Lorber

Elissa Macklin

- Rose Kaplan

- Seymour Kaplan

Alex Mekinulov and Family

Rafael Ben David

Florence Peloquin

L. Regis Peloquin

Judith A. Penney

Blanch Arkin

Susan Rosenstock

Rose Rosenstock

Carol and Gerard Silverman

Ben L. Gardner

Tiffany Starling

Dr. Marion Wilson Starling

Charlotte Wilson

Rose & Jacob Schwartz

Melvin Schweitzer

To thank all my good friends for their wishes for my health and for their New Year's wishes of hope. Good thoughts from good people help make things easier

TORAH FUND

The Doneger Family

In memory of Leo Kuhn, devoted father, grandfather and friend

Martha, Amy & Seth Levin

In celebration of the birth of Brian, Mr and Mrs Alvin Lidsky's grandson

Shirley & Irving Roth

We wish Marge Sussman a speedy recovery and return to good health

In memory of Edward Sobin

Ruth Lansner

Mr. & Mrs. John D. McMahon

HELENE SPRING LIBRARY FUND

Helen Doneger

- To thank my Temple family for all their concern and good wishes for my health
- Remembering the yahrzeits of my husband Morton, my father, Samuel Zamsky and my brother, Charles Zamsky

Helen & Philip Hyman

- Get well wishes to Marge Sussman Mel Schweitzer Helen Sanders
- Congratulation to Sara Siegel on her granddaughter's marriage

Meryl & Michael Mann family

Steve, Geoff, & Debbie Sanders

Helene & Leonard Spring

- Love and prayers to Helen Doneger for a speedy and complete recovery
- Deepest condolences to Selma Lashine on the passing of her dear son, Bill

June Morse

- Congratulations to Sharon and Shul Shemesh on Saar's Bat Mitzvah
- Get well wishes to Mel Schweitzer
- Get well wishes to Helen Doneger
- In memory of my father, Irving A. Bloom and my sister, Janet Pohoriles on their yahrzeits
- Congratulations to Beth and Jerry Labush on the engagements of their daughters

Michael & Marcia Muskat

A very speedy recovery to Marge Sussman

Betty Phillips

- In memory of my son, Robert Blum, on his yahrzeit
- In memory of my daughter-in-law, Paula Phillips, on her yahrzeit

Shirley and Irving Roth

- Congratulations to Sara Siegel on becoming a great-grandmother
- Get well wishes to Helen Doneger
- Congratulations to Beth & Jerry Labush on the engagements of their daughters Rachel and Kyle

Ada & Herb Perlman

Best wishes for a complete recovery to good health for Mel Schweitzer

Helen Sanders

- Congratulations to Sharon & Shaul Shemesh on the Bat Mitzvah of their daughter, Saar
- Congratulations to Sara Siegel on the marriage of her granddaughter
- To wish Mel Schweitzer a speedy return to good health

Ruth and Martin Spencer

In memory of Maurice Silverman, husband of Shirley Silverman

Helene & Leonard Spring

- Congratulations to Sara Siegel on the birth of her great-granddaughter in Israel
- Congratulations to Sara Siegel on the marriage of her granddaughter
- For the speedy and complete recovery of Irving Roth
- In memory of Leo Kuhn
- For the speedy recovery of Lorraine Weiss

Bea Strasnick

Wishing Marjorie Sussman a speedy and complete recovery

Marge & Judith Sussman

- With loving wishes to Helen Doneger that you feel better soon
- Best wishes to Irving Roth for a complete and speedy recovery

Marge, Judith & Don Sussman

In memory of Bill Lashine

FOOD FOR FAMILIES

Esther & Dan Diamond

In honor of Lili Blumenberg on her Bat Mitzvah

Marian, Robert & Gregg Fish

Congratulations to the Brenner Family on Jamie's Bat Mitzvah

Florence Peloquin




- Wishing a return to health for Helen Doneger Mel Schweitzer Marge Sussman
- Congratulations to Beth and Jerry Labush on the engagements of their daughters, Rachel and Kyle

The Reich Family

In memory of Edward Sobin

November 2004

East End Temple

Sunday	Monday	Tuesday	Wednesday	Thursday	Friday	Saturday
 7 10:30 AM Chevrat Nashim 1:00 PM Food For Families	1 	2 <u>Election Day No School</u>	3 4:00 PM Religious School 6:30 PM - 8:00 PM 'Adult Ed/Fall Classes	4 4:00 PM Religious School 5:30 PM Confirmation Class	5 6:00 PM Shabbat Services 7:30 PM 1st grade Dinner	6 10:00 AM Shabbat Chavurah: Torah Study Torah Portion: Chaye Sara Gen. 23:1-25:18
14 10:30 AM Chevrat Nashim	15	16 4:00 PM Religious School 7:00 PM YEC Meeting 7:30 PM Book Club December Templet Closing	17 4:00 PM Religious School 6:30 PM - 8:00 PM 'Adult Ed/Fall Classes 7:00 PM EET Choir	18 4:00 PM Religious School 5:30 PM 7th class/dinner 5:30 PM Confirmation Class	19 6:00 PM Shabbat Services 7:30 PM Congregational Dinner	20 10:00 AM Shabbat Chavurah: Torah Study 2:30 PM Family Ed/ Havdalah Torah Portion: Vayetze Gen. 28:10-32:3
21 10:30 AM Chevrat Nashim 10:30 AM Rosh Chodesh w/Rabbi Jen Krause	22	23 4:00 PM Religious School 7:00 PM EET Choir 7:00 PM Ritual Meeting	24	25  Office Closed Thanksgiving Recess	26 7:30 PM Shabbat Services	27 Torah Portion: Vayishlach Gen. 32:4-36:43
28 10:30 AM Chevrat Nashim	29 7:00 PM EET Choir	30 4:00 PM Religious School 7:00 PM Membership mtg Open School 4 - 6 pm Book Fair 7 - 9 pm	<div style="border: 1px solid black; padding: 10px;"> <p style="text-align: center;">CHARLES S. SALOMON RIVERSIDE MEMORIAL CHAPEL*</p> <p>180 West 76 Street New York, NY 10023 212.362.6600 <i>Our Service Is Available in the Temple, Home, or our Chapel</i> *Is a subsidiary of Service Corporation International 1929 Allen Parkway, Houston, TX 7709 (713) 522-5141</p> </div>			